

DL2 Drum Rotation/Last Layer Indicator

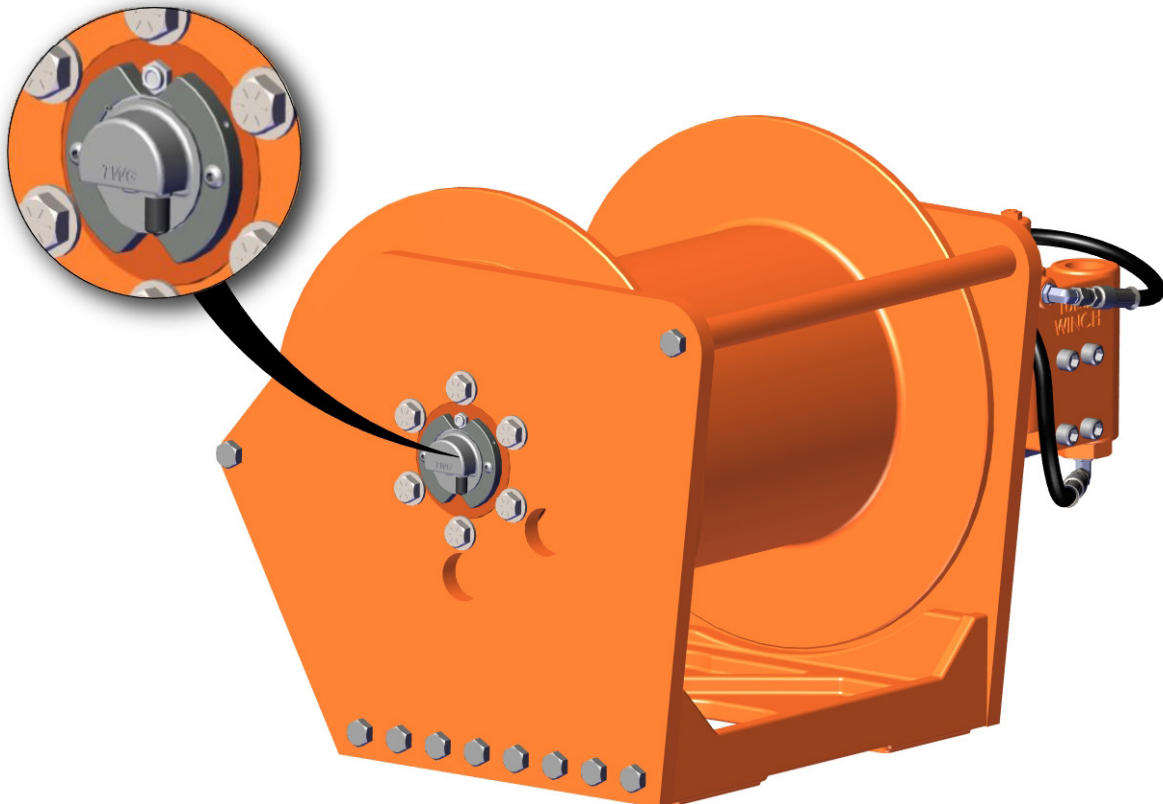
Logs lifetime drum rotation. Monitors and reports your winch speed & direction.
J1939 CAN enabled.



Features and Benefits

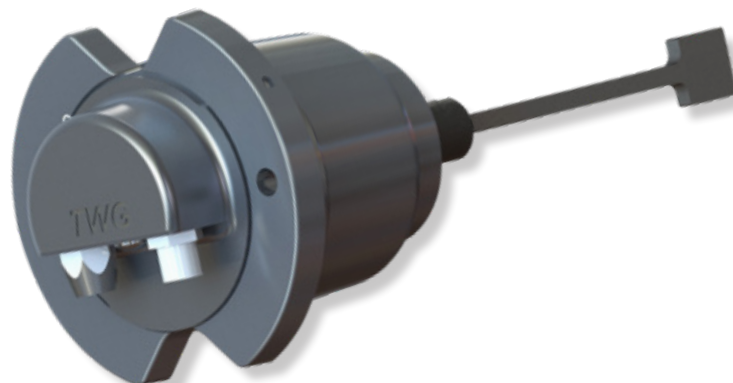
- The DL2 is an important part of your TWG hoist and integrates a drum rotation indicator and last layer indicator into one robust monitoring system. This solution allows owners and operators to comply with OSHA 1926.1401 and 1926.1416 for hoist drum rotation indication, without the need for a video camera, mirrors or other temporary alternatives.
- Utilizing CAN J1939, the DL2 is able to interface with the load moment indicator (LMI) or telematics systems to allow operating in smart working conditions

- The DL2 logs lifetime drum rotations that can help crane owners and operators to more accurately predict hoist maintenance requirements, thus extending the life of the equipment and reducing costly unscheduled downtime.
- The DL2 is user programmable along the last layer of cable as needed. TWG recommends a minimum of 5 wraps for wire cable.



Specifications

Features	DL2
Rotation	Indicates drum rotation
Last layer	Programmable
Speed	Indicates speed & keeps record of highest speed
Direction	Indicates direction of the drum rotation
Lifetime rotations	Logs lifetime drum rotations
Standards	Meets OSHA 1926.1401 and 1926.1416
Communication	CAN J1939
IP rating	IP 67 (submersion up to 3ft. (1m) with cable connected)
Input speed	Up to 3500 rpm
Operating temperature range	-40°C to 85°C (-40°F to 185°F)
Operating voltage range	9-32 VDC
System voltage	Supports 12 and 24 volt systems
Sinking and sourcing output	Supports both outputs up to 2 amps
Warranty	2 years





dovertwg.com
11135 S. James Avenue
Jenks, OK 74037 USA
918.298.8300