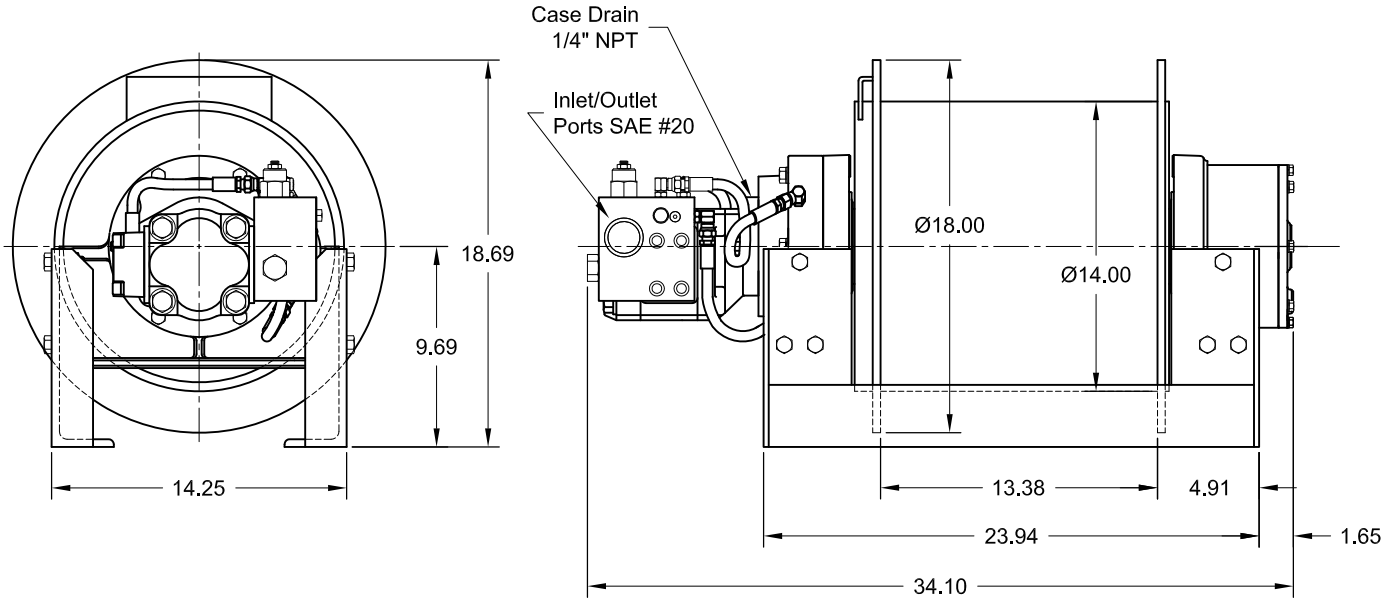




Model SA300B

p/n 52447 - 3,000 lb.



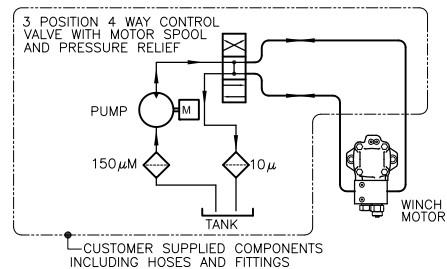
APPROX. WEIGHT: 415 lb.

PERFORMANCE DATA

Layer	Drum Capacity ft	Line Pull lbs	Line Speed fpm
1	134	3000	358
2	275	2850	376
3	425	2720	395
4	579	2590	414
5	741	2480	433

Performance is based on 40 gpm @ 2200 psi with a Ø3/8 wire rope.

TYPICAL HYDRAULIC SYSTEM



Contact your dp sales representative for additional options and features not shown.
The rated line pulls are for the winch only. Consult the rope manufacturer for rope ratings.

Because of continued product improvement, we reserve the right to make changes without notice.

⚠ WARNING	⚠ CAUTION
Winches are not intended to be used for the lifting or moving of persons.	The last 5 wraps cable must be left on the drum to assist the cable clamp in holding the load.

dp Winch is a brand of TWG, a world class manufacturer of integrated gearing and electronic

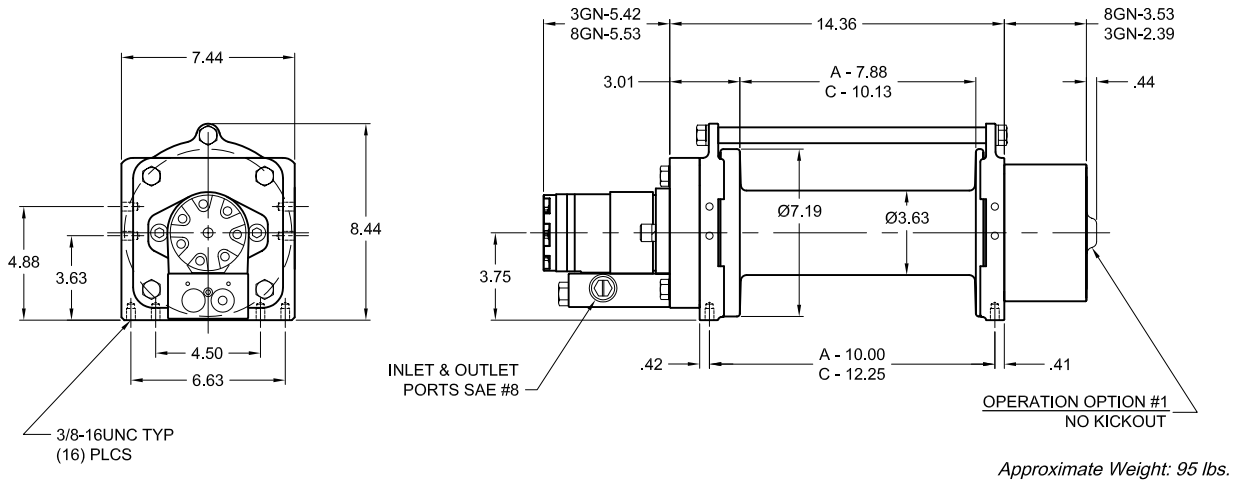
P.O.Box 1130
Jenks, OK 74037-1130
Voice: 918-298-8300
Fax: 918-298-8301
www.dpwinch.com





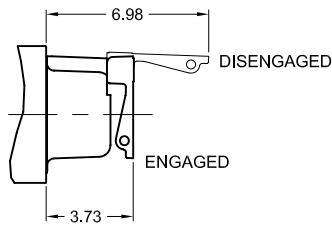
Model 3GN-8GN

3,000-8,000 lb.

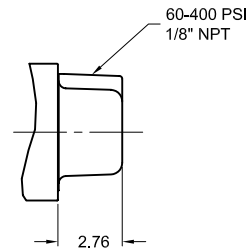


OPTIONAL FEATURES

OPERATION OPTION #5
MANUAL KICKOUT



OPERATION OPTION #4
AIR/HYD. KICKOUT



Contact your dp sales representative for additional options and features not shown.

Because of continued product improvement, we reserve the right to make changes without notice.

⚠ WARNING	⚠ CAUTION
Winches are not intended to be used for the lifting or moving of persons.	The last 5 wraps cable must be left on the drum to assist the cable clamp in holding the load.

dp Winch is a part of the Tulsa Winch Group, a worldwide provider of winch systems and electronic load information systems.

P.O.Box 1130
Jenks, OK 74037-1130
Voice: 918-298-8300
Fax: 918-298-8301
www.dpwinch.com





Model 3GN-8GN

3,000-8,000 lb.

MODEL 3GN

MOTOR OPTION #6

LAYER	LINE PULL (lbs)	LINE SPEED (fpm)
1	3000	167
2	2660	188
3	2380	210
4	2160	232
5	1980	253
6	1820	275
7	1690	296

Performance is based on 15 gpm @ 2750 psi (option #6), with Ø1/4" wire rope.

MODEL 8GN

MOTOR OPTION #1

LAYER	LINE PULL (lbs)	LINE SPEED (fpm)
1	8000	62
2	6740	73
3	5820	85
4	5120	96

Performance is based on 18 gpm @ 2500 psi (option #1), with Ø3/8" wire rope.

DRUM CAPACITIES - FT.

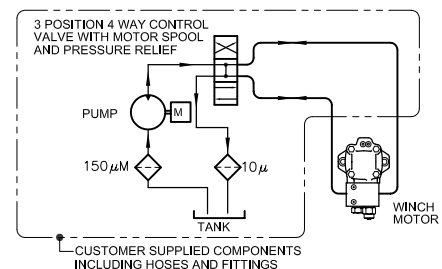
LAYER	Ø1/4"		Ø5/16"		Ø3/8"	
	A	B	A	B	A	B
1	29	37	23	30	20	25
2	61	79	50	65	43	56
3	97	125	81	104	70	91
4	137	177	116	149	100	130*
5	181	233	154*	198*	-	-
6	228	293	-	-	-	-
7	279*	359*	-	-	-	-

Drum capacities are in accordance with SAE J706.

Actual capacities are usually up to 10% greater than those shown.

* Layer does not meet SAE J706.

TYPICAL HYDRAULIC SYSTEM



The rated line pulls are for the winch only. Consult the wire rope manufacturer for wire rope ratings.

Because of continued product improvement, we reserve the right to make changes without notice.

⚠ WARNING	⚠ CAUTION
Winches are not intended to be used for the lifting or moving of persons.	The last 5 wraps cable must be left on the drum to assist the cable clamp in holding the load.

dp Winch is a part of the Tulsa Winch Group, a worldwide provider of winch systems and electronic load information systems.

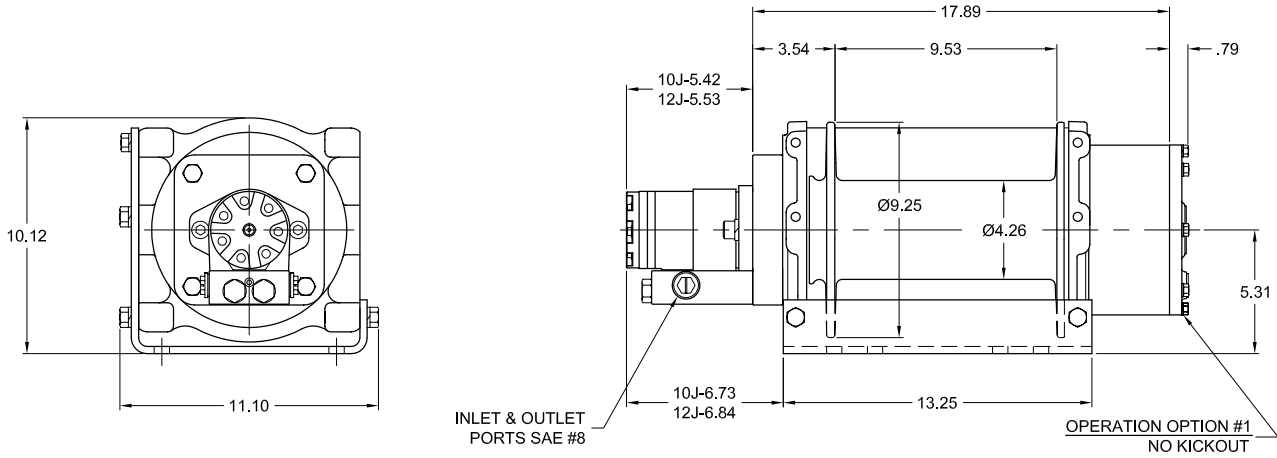
P.O.Box 1130
Jenks, OK 74037-1130
Voice: 918-298-8300
Fax: 918-298-8301
www.dpwinch.com



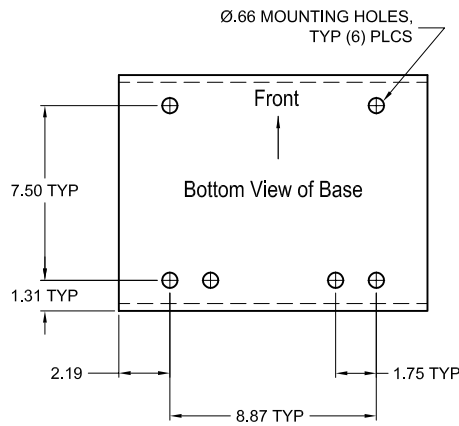


Model 10J-12J

10,000-12,000 lb.

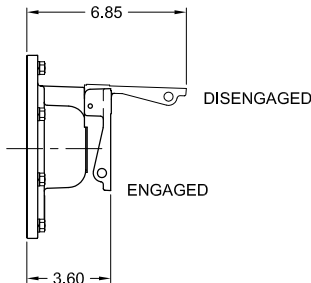


Approximate Weight: 190 lbs.

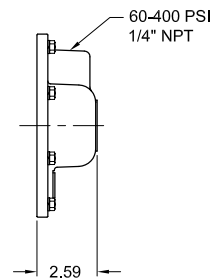


OPTIONAL FEATURES

OPERATION OPTION #1
MANUAL KICKOUT



OPERATION OPTION #4
AIR/HYD. KICKOUT



Contact your dp sales representative for additional options and features not shown.

Because of continued product improvement, we reserve the right to make changes without notice.

⚠ WARNING	⚠ CAUTION
Winches are not intended to be used for the lifting or moving of persons.	The last 5 wraps cable must be left on the drum to assist the cable clamp in holding the load.

dp Winch is a part of the Tulsa Winch Group, a worldwide provider of winch systems and electronic load information systems.

P.O.Box 1130
Jenks, OK 74037-1130
Voice: 918-298-8300
Fax: 918-298-8301
www.dpwinch.com





Model 10J-12J

10,000-12,000 lb.

MODEL 10J

MOTOR OPTION #1

LAYER	LINE PULL (lbs)	LINE SPEED (fpm)
1	10000	44
2	8430	53
3	7290	61
4	6420	69
5	5730	77

Performance is based on 18 gpm @ 2300 psi (option #1), with Ø7/16" wire rope.

MODEL 12J

MOTOR OPTION #1

LAYER	LINE PULL (lbs)	LINE SPEED (fpm)
1	12000	41
2	9920	49
3	8450	58
4	7360	67

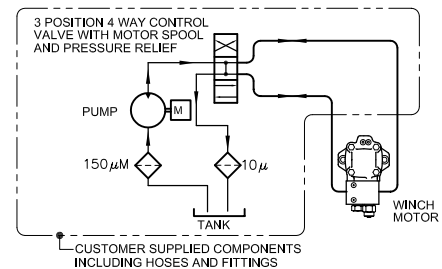
Performance is based on 20 gpm @ 2200 psi (option #1), with Ø1/2" wire rope.

DRUM CAPACITIES - FT.

LAYER	Ø7/16" WIRE ROPE	Ø1/2" WIRE ROPE
1	24	21
2	53	47
3	86	78
4	124	113
5	166*	-

Drum capacities are in accordance with SAE J706.
Actual capacities are usually up to 10% greater than those shown.
* Layer does not meet SAE J706.

TYPICAL HYDRAULIC SYSTEM



The rated line pulls are for the winch only. Consult the wire rope manufacturer for wire rope ratings.

Because of continued product improvement, we reserve the right to make changes without notice.

WARNING	CAUTION
Winches are not intended to be used for the lifting or moving of persons.	The last 5 wraps cable must be left on the drum to assist the cable clamp in holding the load.

dp Winch is a part of the Tulsa Winch Group, a worldwide provider of winch systems and electronic load information systems.

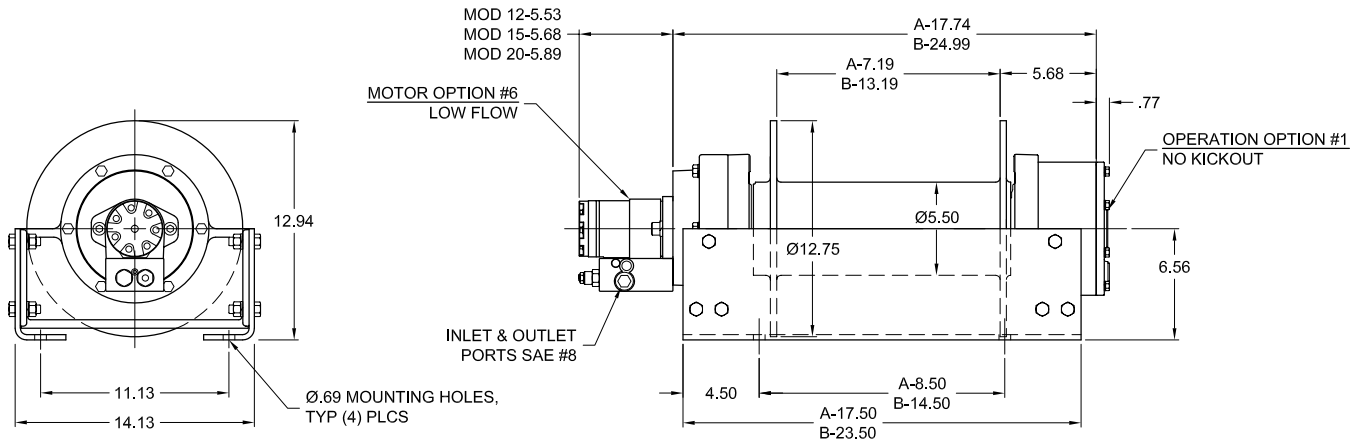
P.O.Box 1130
Jenks, OK 74037-1130
Voice: 918-298-8300
Fax: 918-298-8301
www.dpwinch.com





Model 12-15-20

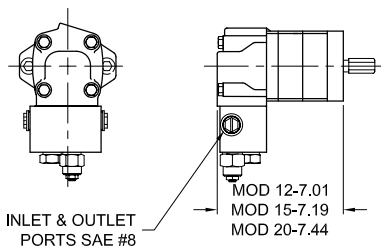
12,000-15,000-20,000 lb.



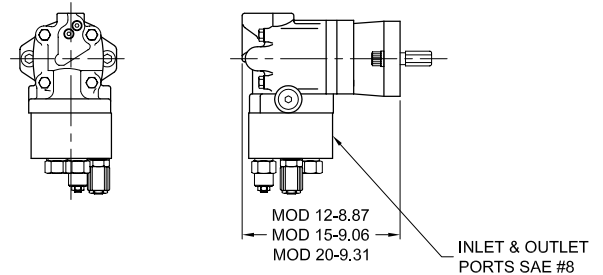
APPROX. WEIGHT: 280 lb.

OPTIONAL FEATURES

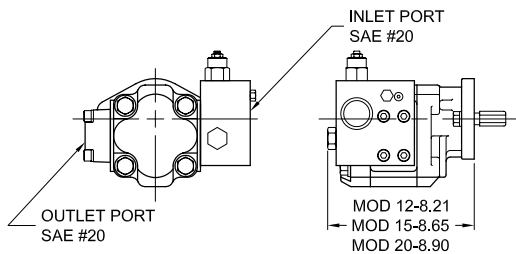
MOTOR OPTION #2
MEDIUM FLOW MOTOR



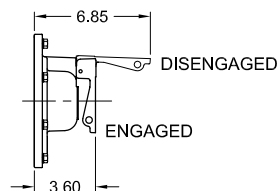
MOTOR OPTION #5
MEDIUM FLOW 2 SPD MOTOR



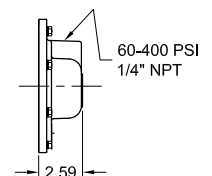
MOTOR OPTION #1
HIGH FLOW MOTOR



OPERATION OPTION #5
MANUAL KICKOUT



OPERATION OPTION #4
AIR/HYDRAULIC KICKOUT



Contact your dp sales representative for additional options and features not shown.

Because of continued product improvement, we reserve the right to make changes without notice.

⚠ WARNING	⚠ CAUTION
Winches are not intended to be used for the lifting or moving of persons.	The last 5 wraps cable must be left on the drum to assist the cable clamp in holding the load.

dp Winch is a part of the Tulsa Winch Group, a worldwide provider of winch systems and electronic load information systems.

P.O.Box 1130
Jenks, OK 74037-1130
Voice: 918-298-8300
Fax: 918-298-8301
www.dpwinch.com





Model 12-15-20

12,000-15,000-20,000 lb.

MOTOR OPTIONS #1, 2, & 6

LAYER	LINE PULL (lbs)	LINE SPEED (fpm)		
		OPTION #1	OPTION #2	OPTION #6
1	12000	116	46	45
2	10300	135	54	52
3	9000	154	61	60
4	8000	173	69	67
5	7200	193	77	75
6	6550	212	84	82
7	6000	231	92	89

Performance is based on 40 gpm @ 2650 psi (option #1), 20 gpm @ 2400 psi (option #2), 20 gpm @ 2400 psi (option #6) with Ø1/2" wire rope.

MOTOR OPTIONS #1, 2, & 6

LAYER	LINE PULL (lbs)	LINE SPEED (fpm)		
		OPTION #1	OPTION #2	OPTION #6
1	15000	110	48	36
2	12700	131	57	42
3	10900	151	66	49
4	9640	172	75	56
5	8610	192	84	62
6	7780	213	93	69

Performance is based on 50 gpm @ 2700 psi (option #1), 25 gpm @ 2500 psi (option #2), 20 gpm @ 2450 psi (option #6), with Ø9/16" wire rope.

MOTOR OPTIONS #1, 2, & 6

LAYER	LINE PULL (lbs)	LINE SPEED (fpm)		
		OPTION #1	OPTION #2	OPTION #6
1	20000	107	37	29
2	16600	128	45	35
3	14200	150	52	41
4	12400	172	60	46
5	11000	193	67	52

Performance is based on 60 gpm @ 3000 psi (option #1), 25 gpm @ 2500 psi (option #2), 20 gpm @ 2600 psi (option #6), with Ø5/8" wire rope.

DRUM CAPACITIES - FT.

LAYER	Ø1/2" WIRE ROPE		Ø9/16" WIRE ROPE		Ø5/8" WIRE ROPE	
	A	B	A	B	A	B
1	20	37	18	33	17	30
2	44	81	40	73	37	67
3	71	131	65	119	60	110
4	102	186	93	171	87	159
5	135	249	125	230	117	214
6	173	317	160*	294*	-	-
7	213*	392*	-	-	-	-

Drum capacities are in accordance with SAE J706. Actual capacities are usually up to 10% greater than those shown. * Layer does not meet SAE J706.

The rated line pulls are for the winch only. Consult the wire rope manufacturer for wire rope ratings.

MODEL 12

2 SPEED MOTOR OPTION #5

LAYER	LINE PULL (lbs)		LINE SPEED (fpm)	
	LOW	HIGH	LOW	HIGH
1	12000	6000	35	69
2	10300	5140	40	81
3	9000	4500	46	92
4	8000	4000	52	104
5	7200	36000	58	115
6	6550	3270	63	127
7	6000	3000	69	138

Performance is based on 15 gpm @ 2350 psi with Ø1/2" wire rope.

MODEL 15

2 SPEED MOTOR OPTION #5

LAYER	LINE PULL (lbs)		LINE SPEED (fpm)	
	LOW	HIGH	LOW	HIGH
1	15000	7500	38	76
2	12700	6330	45	90
3	10900	5470	52	104
4	9640	4820	59	118
5	8610	4300	66	132
6	7780	3890	73	146

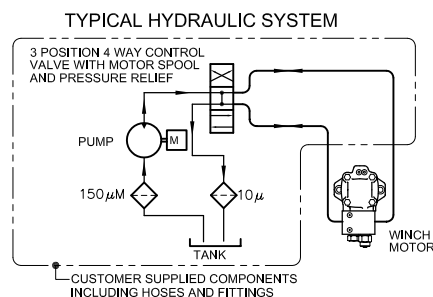
Performance is based on 20 gpm @ 2400 psi with Ø9/16" wire rope.

MODEL 20

2 SPEED MOTOR OPTION #5

LAYER	LINE PULL (lbs)		LINE SPEED (fpm)	
	LOW	HIGH	LOW	HIGH
1	20000	10000	36	71
2	16600	8310	43	86
3	14200	7100	50	100
4	12400	6200	57	115
5	11000	5510	65	129

Performance is based on 24 gpm @ 2500 psi with Ø5/8" wire rope.



Because of continued product improvement, we reserve the right to make changes without notice.

⚠ WARNING	⚠ CAUTION
Winches are not intended to be used for the lifting or moving of persons.	The last 5 wraps cable must be left on the drum to assist the cable clamp in holding the load.

dp Winch is a part of the Tulsa Winch Group, a worldwide provider of winch systems and electronic load information systems.

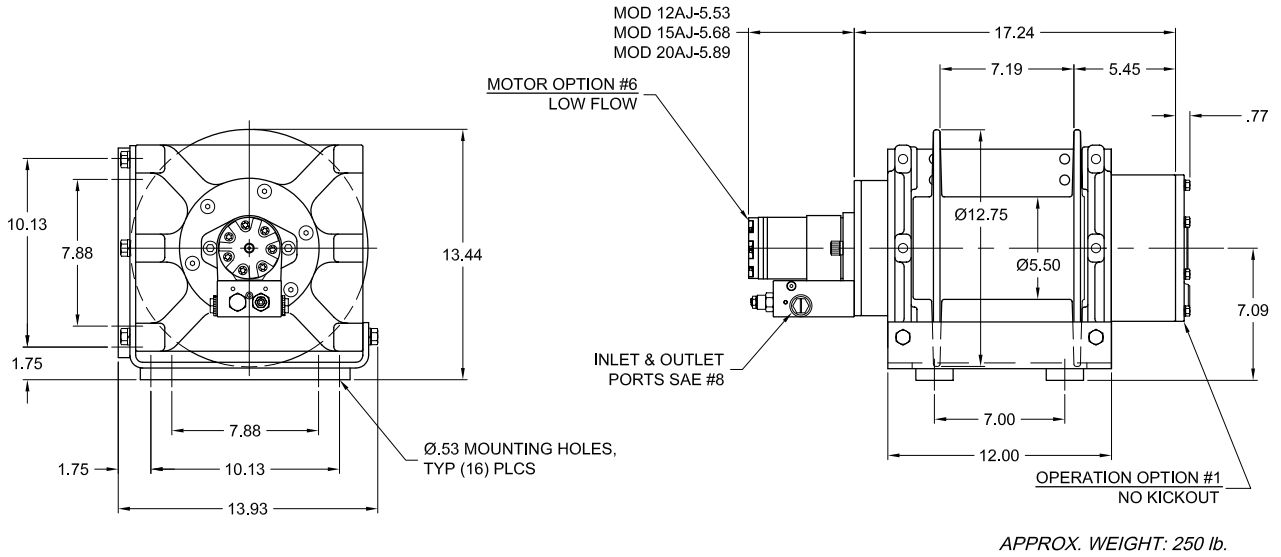
P.O. Box 1130
Jenks, OK 74037-1130
Voice: 918-298-8300
Fax: 918-298-8301
www.dpwinch.com





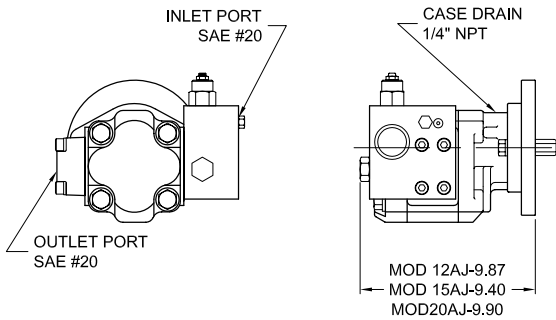
Model 12AJ-15AJ-20AJ

12,000-15,000-20,000 lb.

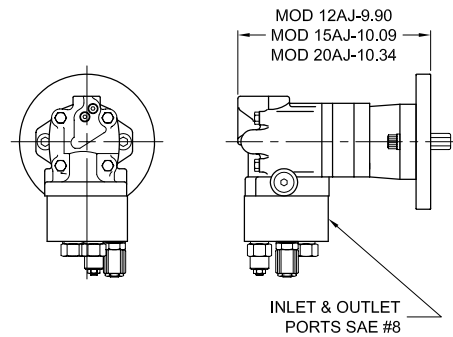


OPTIONAL FEATURES

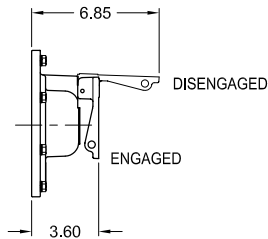
MOTOR OPTION #1 HIGH FLOW



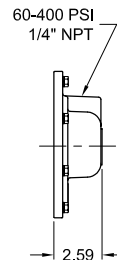
MOTOR OPTION #5 2 SPEED MOTOR



OPERATION OPTION #5 MANUAL-LEVER KICKOUT



OPERATION OPTION #4 AIR/HYDRAULIC KICKOUT



Contact your dp sales representative for additional options and features not shown.

Because of continued product improvement, we reserve the right to make changes without notice.

⚠ WARNING	⚠ CAUTION
Winches are not intended to be used for the lifting or moving of persons.	The last 5 wraps cable must be left on the drum to assist the cable clamp in holding the load.

dp Winch is a part of the Tulsa Winch Group, a worldwide provider of winch systems and electronic load information systems.

P.O.Box 1130
Jenks, OK 74037-1130
Voice: 918-298-8300
Fax: 918-298-8301
www.dpwinch.com





Model 12AJ-15AJ-20AJ

12,000-15,000-20,000 lb.

MOTOR OPTIONS #1 & 6

LAYER	LINE PULL (lbs)	LINE SPEED (fpm)	
		OPTION #1	OPTION #6
1	12000	116	45
2	10300	135	52
3	9000	154	60
4	8000	173	67
5	7200	193	74
6	6550	212	82
7	6000	231	89

Performance is based on 40 gpm @ 2700 psi (option #1), 20 gpm @ 2400 psi (option #6) with Ø1/2" wire rope.

MOTOR OPTIONS #1 & 6

LAYER	LINE PULL (lbs)	LINE SPEED (fpm)	
		OPTION #1	OPTION #6
1	15000	101	36
2	12700	120	42
3	10900	139	49
4	9640	158	56
5	8610	177	62
6	7780	195	69

Performance is based on 45 gpm @ 2700 psi (option #1), 20 gpm @ 2500 psi (option #6) with Ø9/16" wire rope.

MOTOR OPTIONS #1 & 6

LAYER	LINE PULL (lbs)	LINE SPEED (fpm)	
		OPTION #1	OPTION #6
1	20000	107	29
2	16600	128	35
3	14200	150	41
4	12400	172	46
5	11000	193	52

Performance is based on 60 gpm @ 3000 psi (option #1), 20 gpm @ 2600 psi (option #6) with Ø5/8" wire rope.

DRUM CAPACITIES - FT.

LAYER	Ø1/2" WIRE ROPE	Ø9/16" WIRE ROPE	Ø5/8" WIRE ROPE
1	20	18	17
2	44	40	37
3	71	65	60
4	102	93	87
5	135	125	117
6	173	160*	-
7	213*	-	-

Drum capacities are in accordance with SAE J706.
Actual capacities are usually up to 10% greater than those shown.
* Layer does not meet SAE J706.

MODEL 12AJ

2 SPEED MOTOR OPTIONS #5

LAYER	LINE PULL (lbs)		LINE SPEED (fpm)	
	LOW	HIGH	LOW	HIGH
1	12000	6000	34	68
2	10300	5150	40	80
3	9000	4500	45	90
4	8000	4000	51	102
5	7200	3600	57	114
-	6550	3275	62	124
-	6000	3000	68	136

Performance is based on 15 gpm @ 2300 psi with Ø1/2" wire rope.

MODEL 15AJ

2 SPEED MOTOR OPTIONS #5

LAYER	LINE PULL (lbs)		LINE SPEED (fpm)	
	LOW	HIGH	LOW	HIGH
1	15000	7500	33	66
2	12700	6350	39	78
3	10900	5450	45	90
4	9640	4820	51	102
5	8610	4300	58	116
6	7780	3890	64	128

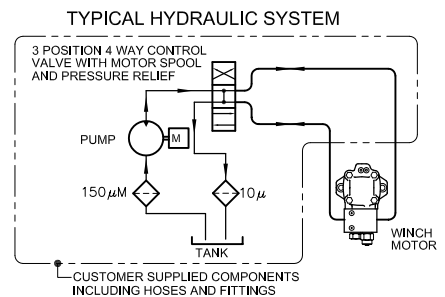
Performance is based on 18 gpm @ 2300 psi with Ø9/16" wire rope.

MODEL 20AJ

2 SPEED MOTOR OPTIONS #5

LAYER	LINE PULL (lbs)		LINE SPEED (fpm)	
	LOW	HIGH	LOW	HIGH
1	20000	10000	36	72
2	16600	8300	43	86
3	14200	7100	50	100
4	12400	6200	57	114
5	11000	5500	65	130

Performance is based on 24 gpm @ 2500 psi with Ø5/8" wire rope.



The rated line pulls are for the winch only. Consult the wire rope manufacturer for wire rope ratings.

Because of continued product improvement, we reserve the right to make changes without notice.

⚠ WARNING	⚠ CAUTION
Winches are not intended to be used for the lifting or moving of persons.	The last 5 wraps cable must be left on the drum to assist the cable clamp in holding the load.

dp Winch is a part of the Tulsa Winch Group, a worldwide provider of winch systems and electronic load information systems.

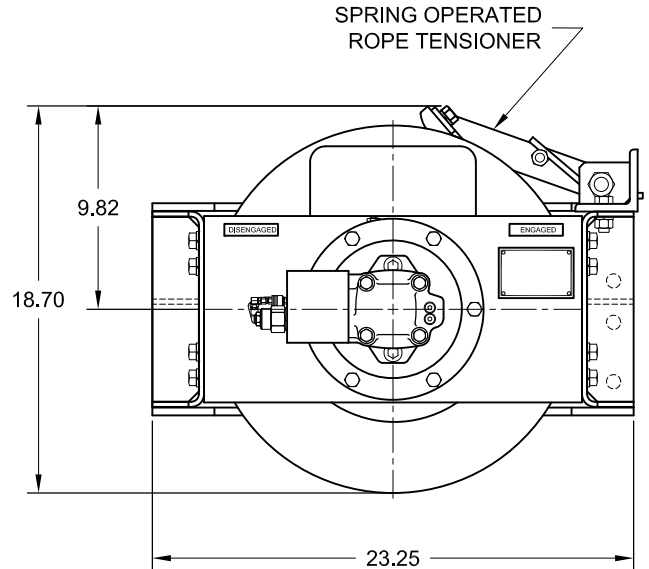
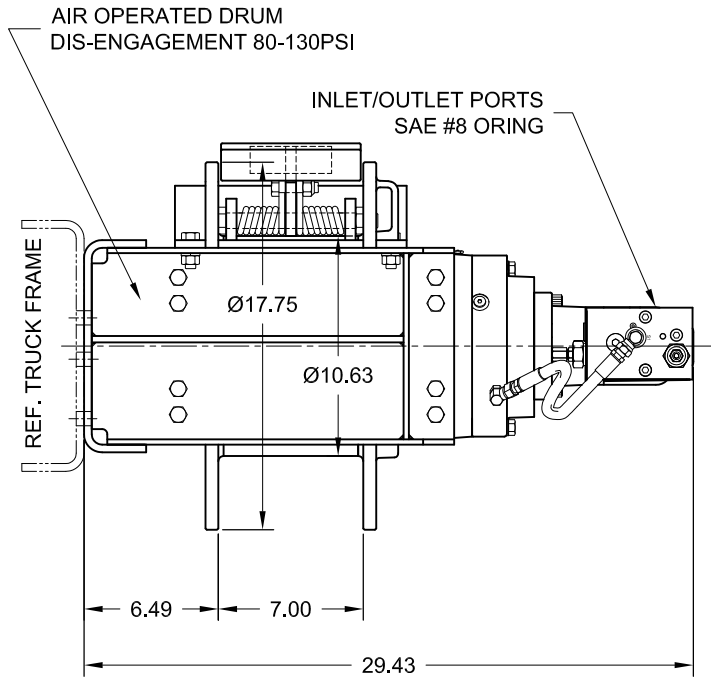
P.O.Box 1130
Jenks, OK 74037-1130
Voice: 918-298-8300
Fax: 918-298-8301
www.dpwinch.com





Model 20K

20,000 lb.

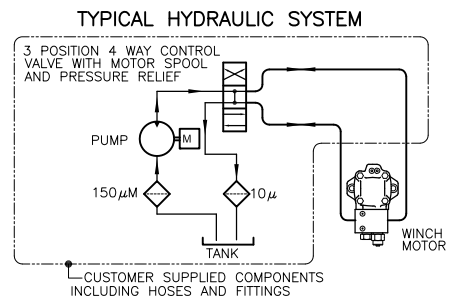


APPROX. WEIGHT: 510 lb.

PERFORMANCE DATA

Layer	Drum Capacity ft	Line Pull lbs	Line Speed fpm
1	33	20000	49
2	69	18200	54
3	108	16700	59
4	151	15400	64
5	197	14300	69
6	246*	13300	74

Performance is based on 30 gpm (max flow) @ 2750 psi with Ø9/16" wire rope. Cable capacities are in accordance with SAE J706, with the exception of the *last layer. Actual cable capacities are usually up to 10% greater than those shown. Other performance and motor options are available.



Contact your dp sales representative for additional options and features not shown.
The rated line pulls are for the winch only. Consult the rope manufacturer for rope ratings.

Because of continued product improvement, we reserve the right to make changes without notice.

WARNING Winches are not intended to be used for the lifting or moving of persons.	CAUTION The last 5 wraps cable must be left on the drum to assist the cable clamp in holding the load.
---	--

dp Winch is a brand of TWG, a world class manufacturer of integrated gearing and electronic

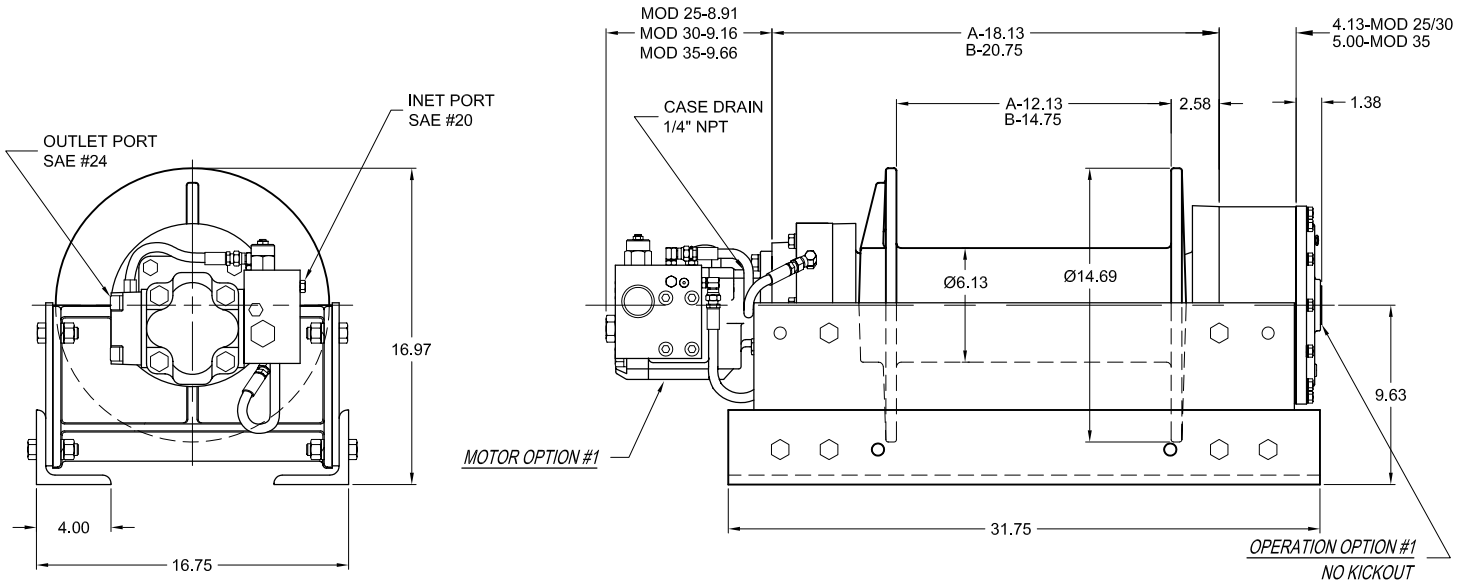
P.O.Box 1130
Jenks, OK 74037-1130
Voice: 918-298-8300
Fax: 918-298-8301
www.dpwinch.com





Model 25-30-35

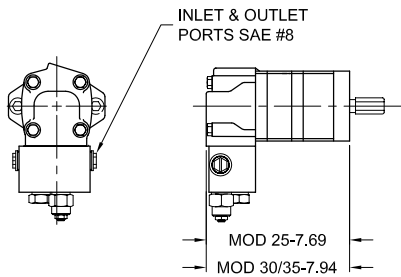
25,000-30,000-35,000 lb.



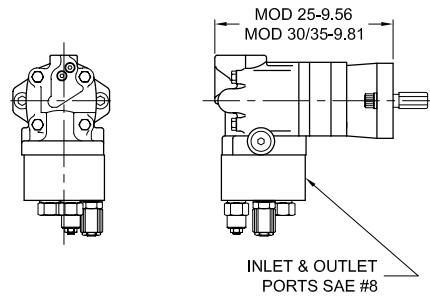
APPROX. WEIGHT: 645 lb.

OPTIONAL FEATURES

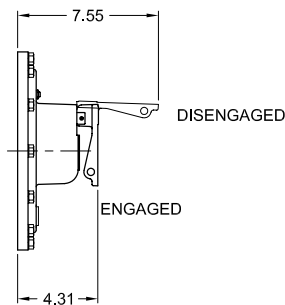
MOTOR OPTION #2 MEDIUM FLOW



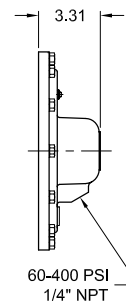
MOTOR OPTION #5 & 9 LOW FLOW 2 SPEED



OPERATION OPTION #5 MANUAL LEVER KICK OUT



OPERATION OPTION #4 AIR/HYDRAULIC KICKOUT



Contact your dp sales representative for additional options and features not shown.

Because of continued product improvement, we reserve the right to make changes without notice.

⚠ WARNING	⚠ CAUTION
Winches are not intended to be used for the lifting or moving of persons.	The last 5 wraps cable must be left on the drum to assist the cable clamp in holding the load.

dp Winch is a part of the Tulsa Winch Group, a worldwide provider of winch systems and electronic load information systems.

P.O.Box 1130
Jenks, OK 74037-1130
Voice: 918-298-8300
Fax: 918-298-8301
www.dpwinch.com





Model 25-30-35

25,000-30,000-35,000 lb.

MOTOR OPTIONS #1 & 2

LAYER	LINE PULL (lbs)	LINE SPEED (fpm)	
		OPTION #1	OPTION #2
1	25000	83	37
2	21400	97	44
3	18700	111	50
4	16600	125	56
5	14900	140	62
6	13600	154	69
7	12400	168	75

Performance is based on 60 gpm @ 2850 psi (option #1), 25 gpm @ 3000 psi (option #2) with Ø9/16" wire rope.

MOTOR OPTIONS #1 & 2

LAYER	LINE PULL (lbs)	LINE SPEED (fpm)	
		OPTION #1	OPTION #2
1	30000	65	29
2	25300	77	35
3	21900	89	40
4	19300	101	46
5	17200	113	51
6	15600	125	56

Performance is based on 60 gpm @ 2750 psi (option #1), 25 gpm @ 2850 psi (option #2) with Ø5/8" wire rope.

MOTOR OPTIONS #1 & 2

LAYER	LINE PULL (lbs)	LINE SPEED (fpm)	
		OPTION #1	OPTION #2
1	35000	52	30
2	28700	64	36
3	24400	75	42
4	21200	87	49
5	18700	98	55

Performance is based on 60 gpm @ 2500 psi (option #1), 30 gpm @ 2850 psi (option #2) with Ø3/4" wire rope.

DRUM CAPACITIES - FT.

LAYER	Ø9/16" WIRE ROPE		Ø5/8" WIRE ROPE		Ø3/4" WIRE ROPE	
	A	B	A	B	A	B
1	34	41	31	38	26	32
2	74	90	67	82	58	71
3	119	145	110	133	96	116
4	170	207	158	192	139	169
5	227	276	211	257	188	229
6	289	352	271	329	-	-
7	358*	435*	-	-	-	-

Drum capacities are in accordance with SAE J706. Actual capacities are usually up to 10% greater than those shown. * Layer does not meet SAE J706.

The rated line pulls are for the winch only. Consult the wire rope manufacturer for wire rope ratings.

MODEL 25

2 SPEED MOTOR OPTIONS #5 & 9

LAYER	LINE PULL (lbs)		LINE SPEED (fpm)	
	LOW	HIGH	LOW	HIGH
1	25000	12500	28	57
2	21400	10700	33	66
3	18700	9350	38	76
4	16600	8310	43	85
5	14900	7470	47	95
6	13600	6790	52	104
7	12400	6220	57	114

Performance is based on 20 gpm @ 2900 psi with Ø9/16 wire rope.

MODEL 30

2 SPEED MOTOR OPTIONS #5 & 9

LAYER	LINE PULL (lbs)		LINE SPEED (fpm)	
	LOW	HIGH	LOW	HIGH
1	30000	15000	28	56
2	25300	12700	33	67
3	21900	10900	38	77
4	19300	9640	44	87
5	17200	8620	49	98
6	15600	7790	54	108

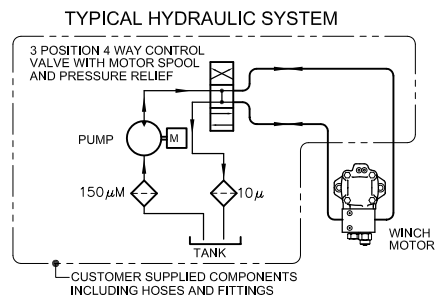
Performance is based on 24 gpm @ 2800 psi with Ø5/8" wire rope.

MODEL 35

2 SPEED MOTOR OPTIONS #5 & 9

LAYER	LINE PULL (lbs)		LINE SPEED (fpm)	
	LOW	HIGH	LOW	HIGH
1	35000	17500	24	49
2	28700	14400	30	59
3	24400	12200	35	70
4	21200	10600	40	80
5	18700	9340	46	91

Performance is based on 25 gpm @ 2800 psi with Ø3/4" wire rope.



Because of continued product improvement, we reserve the right to make changes without notice.

⚠ WARNING Winches are not intended to be used for the lifting or moving of persons.	⚠ CAUTION The last 5 wraps cable must be left on the drum to assist the cable clamp in holding the load.
---	--

dp Winch is a part of the Tulsa Winch Group, a worldwide provider of winch systems and electronic load information systems.

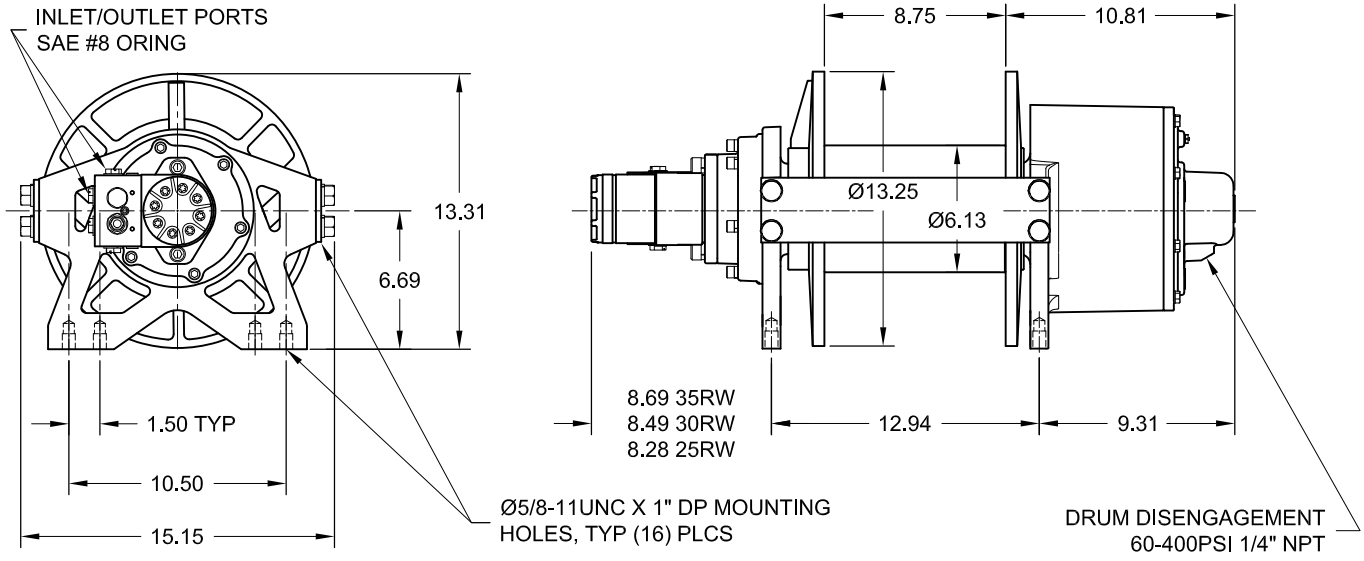
P.O. Box 1130
 Jenks, OK 74037-1130
 Voice: 918-298-8300
 Fax: 918-298-8301
 www.dpwinch.com





Model 25-30-35RW

25,000-30,000-35,000 lb.



APPROX. WEIGHT: 265 lb.

35RW - PERFORMANCE DATA

Layer	Drum Capacity ft	Line Pull lbs	Line Speed fpm
1	19	35000	8
2	42	28700	10
3	69	24400	12
4	100	21200	13

Performance is based on 10 gpm @ 2700 psi with a Ø3/4 wire rope.

30RW - PERFORMANCE DATA

Layer	Drum Capacity ft	Line Pull lbs	Line Speed fpm
1	22	30000	10
2	49	25300	12
3	79	21900	14
4	114	19300	16
5	153	17200	17

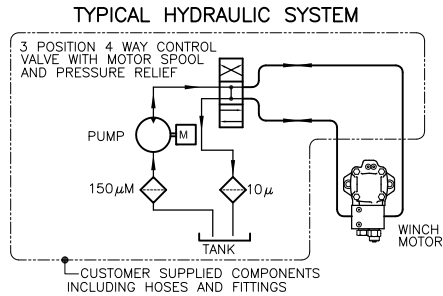
Performance is based on 10 gpm @ 2700 psi with a Ø5/8 wire rope.

25RW - PERFORMANCE DATA

Layer	Drum Capacity ft	Line Pull lbs	Line Speed fpm
1	25	25000	12
2	53	21400	14
3	86	18700	16
4	123	16600	18
5	164	14900	21
6	209	13600	23

Performance is based on 10 gpm @ 2800 psi with a Ø9/16 wire rope.

Cable capacities are in accordance with SAE J706. Actual cable capacities are usually up to 10% greater than those shown.



Contact your dp sales representative for additional options and features not shown.
The rated line pulls are for the winch only. Consult the rope manufacturer for rope ratings.

Because of continued product improvement, we reserve the right to make changes without notice.

WARNING	CAUTION
Winches are not intended to be used for the lifting or moving of persons.	The last 5 wraps cable must be left on the drum to assist the cable clamp in holding the load.

dp Winch is a part of the Tulsa Winch Group, a worldwide provider of winch systems and electronic load information systems.

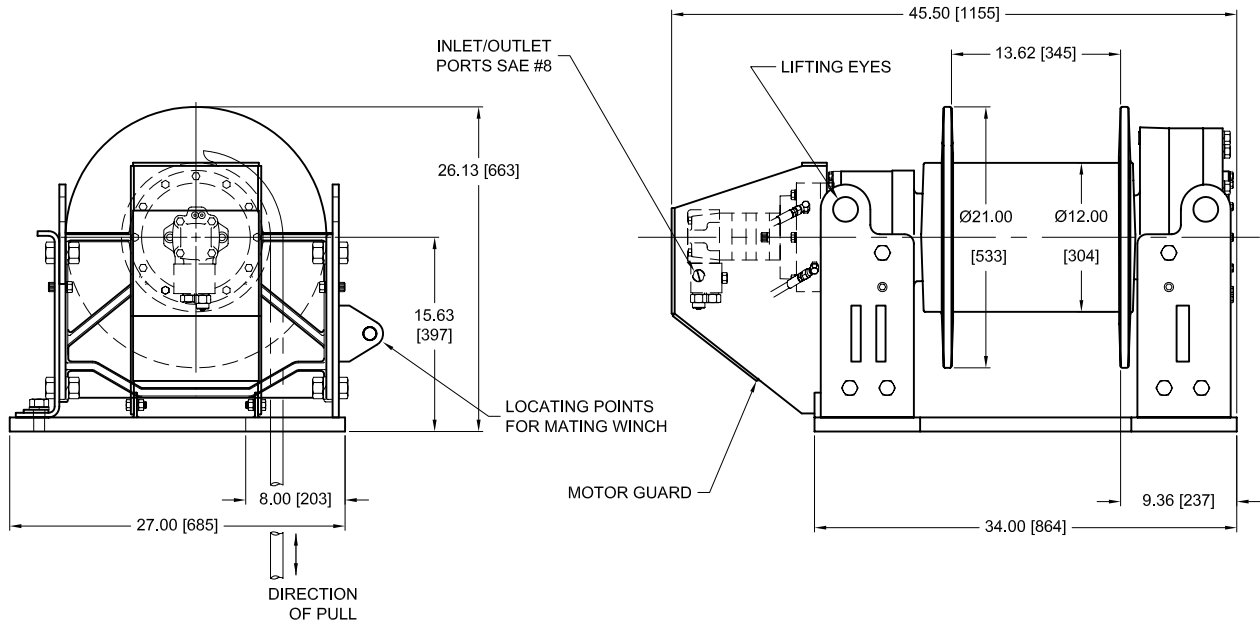
P.O.Box 1130
Jenks, OK 74037-1130
Voice: 918-298-8300
Fax: 918-298-8301
www.dpwinch.com





Model BP25

25,000 lb. [111.2 kN]



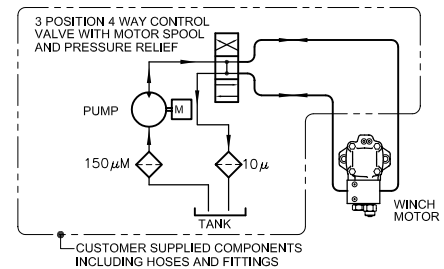
ESTIMATED WEIGHT: 3950 lb [1791kg]
DUAL DIMENSIONED-INCHES [mm]

PERFORMANCE DATA

LAYER	LINE PULL		LINE SPEED		DRUM CAPACITY	
	lbs.	kN	fpm	mpm	ft.	m
1	25,000	111.2	22	6.7	42	12.0
2	21,700	96.5	26	7.9	90	27.4
3	19,100	84.9	29	8.8	144	43.8
4	17,100	76.0	33	10.0	205*	62.4*

Performance is based on 20 gpm [75 l/min] @ 2,450 psi [168bars] with Ø1 [25.4mm] wire rope. (*) Layer capacity not per SAE J706.

TYPICAL HYDRAULIC SYSTEM



The rated line pulls are for the winch only. Consult API RP 9B, section 3.3.3.D and API Specification 7K, section 9.13.3.13 for information on rope selection of BOP handling system winches.

Contact your dp sales representative for additional options and features not shown.

Because of continued product improvement, we reserve the right to make changes without notice.

⚠ WARNING	⚠ CAUTION
Winches are not intended to be used for the lifting or moving of persons.	The last 5 wraps cable must be left on the drum to assist the cable clamp in holding the load.

dp Winch is a brand of TWG, a world class manufacturer of integrated gearing and electronic

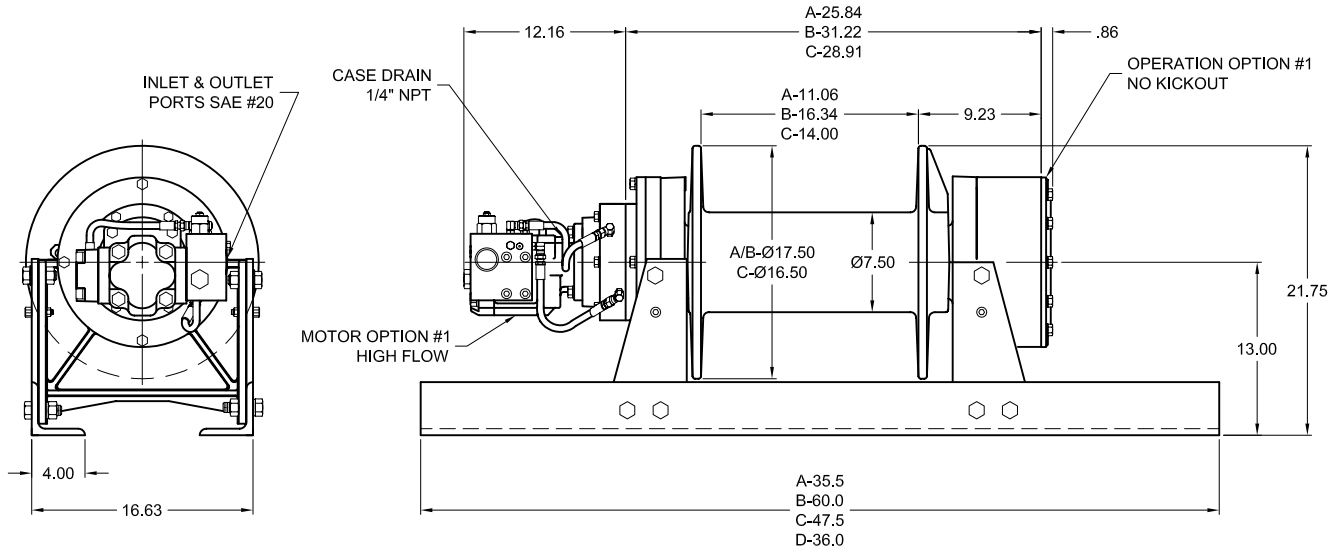
P.O.Box 1130
Jenks, OK 74037-1130
Voice: 918-298-8300
Fax: 918-298-8301
www.dpwinch.com





Model 45

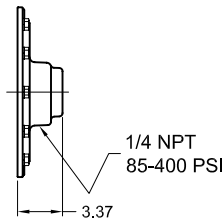
45,000 lb.



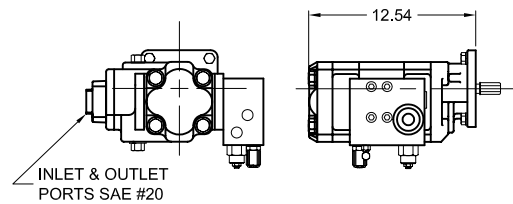
APPROX. WEIGHT: 930 lb.

OPTIONAL MOTORS

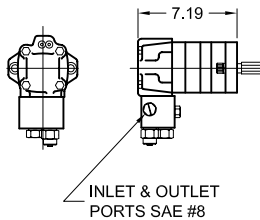
OPERATION OPTION #4
AIR/HYD KICKOUT



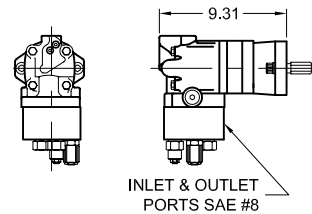
MOTOR OPTION #5 & 6
HIGH FLOW 2 SPEED MOTOR



MOTOR OPTION #2
LOW FLOW MOTOR



MOTOR OPTION #3 & 9
LOW FLOW 2 SPEED MOTOR



Contact your dp sales representative for additional options and features not shown.

Because of continued product improvement, we reserve the right to make changes without notice.

⚠ WARNING	⚠ CAUTION
Winches are not intended to be used for the lifting or moving of persons.	The last 5 wraps cable must be left on the drum to assist the cable clamp in holding the load.

dp Winch is a part of the Tulsa Winch Group, a worldwide provider of winch systems and electronic load information systems.

P.O.Box 1130
Jenks, OK 74037-1130
Voice: 918-298-8300
Fax: 918-298-8301
www.dpwinch.com





Model 45

45,000 lb.

MOTOR OPTION #1 - HIGH FLOW

LAYER	LINE PULL (lbs)	LINE SPEED (fpm)
1	45000	40
2	38100	48
3	33000	55
4	29100	62
5	26100	69
6	23600	77

Performance is based on 60 gpm @ 2600 psi with Ø3/4" wire rope.

MOTOR OPTION #2 - LOW FLOW

LAYER	LINE PULL (lbs)	LINE SPEED (fpm)
1	45000	18
2	38100	21
3	33000	25
4	29100	28
5	26100	31
6	23600	34

Performance is based on 25 gpm @ 2800 psi with Ø3/4" wire rope.

2 SPEED MOTOR OPTIONS #5 & 6 - HIGH FLOW

LAYER	LINE PULL (lbs)		LINE SPEED (fpm)	
	LOW	HIGH	LOW	HIGH
1	45000	22500	30	60
2	38100	19000	36	71
3	33000	16500	41	82
4	29100	14600	47	93
5	26100	13000	52	104
6	23600	11800	58	115

Performance is based on 45 gpm @ 2600 psi with Ø3/4" wire rope.

2 SPEED MOTOR OPTIONS #3 & 9 - LOW FLOW

LAYER	LINE PULL (lbs)		LINE SPEED (fpm)	
	LOW	HIGH	LOW	HIGH
1	45000	22500	18	36
2	38100	19000	21	43
3	33000	16500	25	50
4	29100	14600	28	56
5	26100	13000	31	63
6	23600	11800	35	69

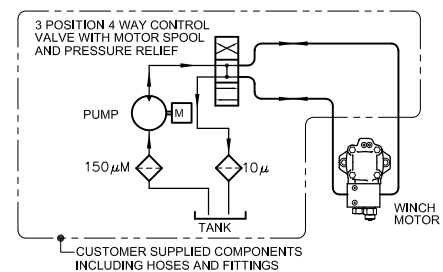
Performance is based on 24 gpm @ 2850 psi with Ø3/4" wire rope.

DRUM CAPACITIES - FT.

LAYER	Ø3/4" WIRE ROPE			Ø7/8" WIRE ROPE		
	A	B	C	A	B	C
1	29	42	36	25	37	32
2	63	92	79	55	81	70
3	102	150	129	90	134	115
4	146	216	185	131	194	166
5	195	289	247	177	261	224*
6	250*	370*	317*	-	-	-

Drum capacities are in accordance with SAE J706.
Actual capacities are usually up to 10% greater than those shown.
* Layer does not meet SAE J706.

TYPICAL HYDRAULIC SYSTEM



The rated line pulls are for the winch only. Consult the wire rope manufacturer for wire rope ratings.

Because of continued product improvement, we reserve the right to make changes without notice.

⚠ WARNING	⚠ CAUTION
Winches are not intended to be used for the lifting or moving of persons.	The last 5 wraps cable must be left on the drum to assist the cable clamp in holding the load.

dp Winch is a part of the Tulsa Winch Group, a worldwide provider of winch systems and electronic load information systems.

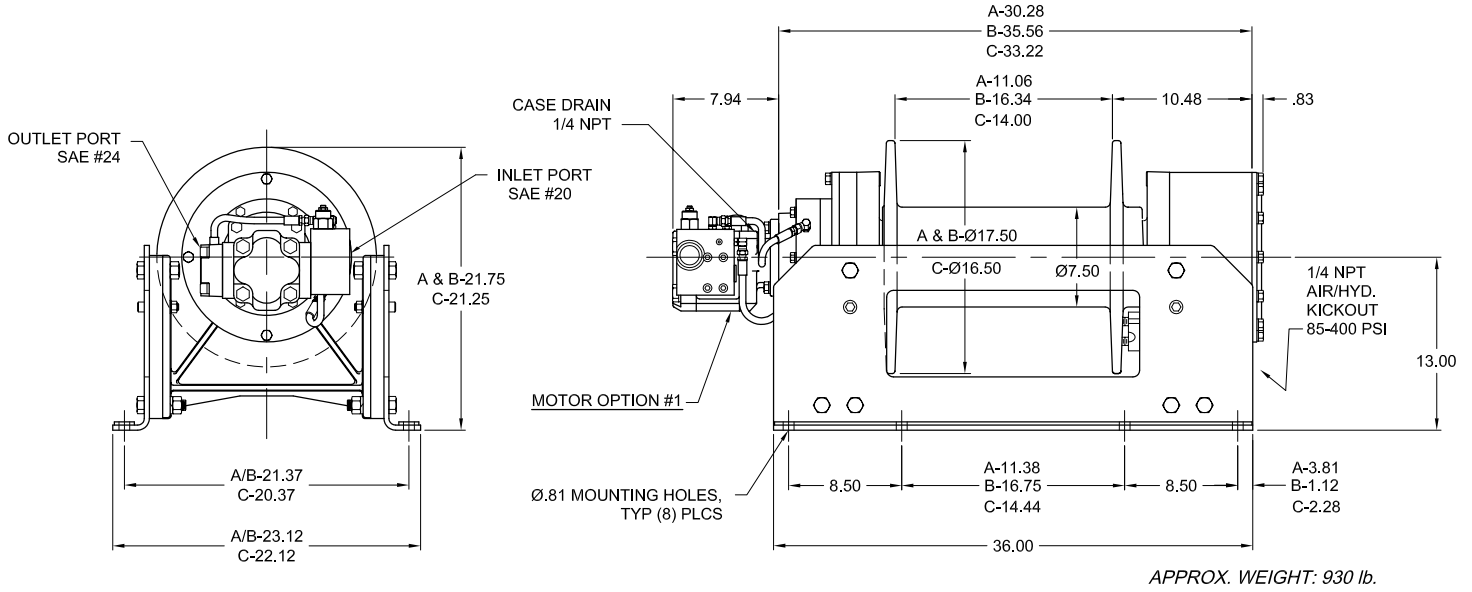
P.O.Box 1130
Jenks, OK 74037-1130
Voice: 918-298-8300
Fax: 918-298-8301
www.dpwinch.com





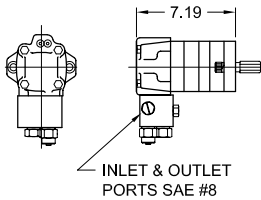
Model 50

50,000 lb.

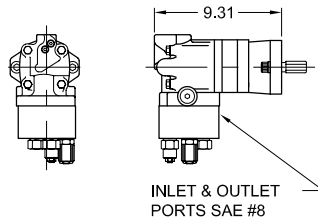


OPTIONAL MOTORS

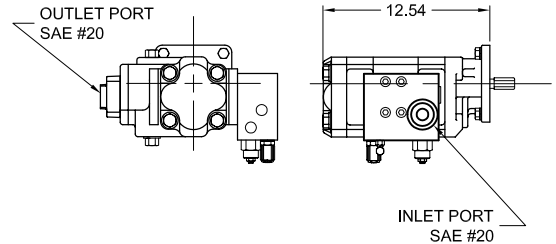
MOTOR OPTION #2
LOW FLOW MOTOR



MOTOR OPTION #3 & 9
LOW FLOW 2 SPEED MOTOR



MOTOR OPTION #5 & 6
HIGH FLOW 2 SPEED MOTOR



Contact your dp sales representative for additional options and features not shown.

Because of continued product improvement, we reserve the right to make changes without notice.

⚠ WARNING	⚠ CAUTION
Winches are not intended to be used for the lifting or moving of persons.	The last 5 wraps cable must be left on the drum to assist the cable clamp in holding the load.

dp Winch is a part of the Tulsa Winch Group, a worldwide provider of winch systems and electronic load information systems.

P.O.Box 1130
Jenks, OK 74037-1130
Voice: 918-298-8300
Fax: 918-298-8301
www.dpwinch.com





Model 50

50,000 lb.

MOTOR OPTION #1 - HIGH FLOW

LAYER	LINE PULL (lbs)	LINE SPEED (fpm)
1	50000	38
2	41400	46
3	35300	53
4	30700	61
5	27200	69

Performance is based on 60 gpm @ 2750 psi with $\varnothing 7/8$ " wire rope.

MOTOR OPTION #2 - LOW FLOW

LAYER	LINE PULL (lbs)	LINE SPEED (fpm)
1	50000	16
2	41400	20
3	35300	23
4	30700	27
5	27200	30

Performance is based on 25 gpm @ 2900 psi with $\varnothing 7/8$ " wire rope.

2 SPEED MOTOR OPTIONS #3 & 9 - LOW FLOW

LAYER	LINE PULL (lbs)		LINE SPEED (fpm)	
	LOW	HIGH	LOW	HIGH
1	50000	25000	17	34
2	41400	20700	21	41
3	35300	17600	24	48
4	30700	15400	28	55
5	27200	13600	31	63

Performance is based on 24 gpm @ 2900 psi with $\varnothing 7/8$ " wire rope.

2 SPEED MOTOR OPTIONS #5 & 6 - HIGH FLOW

LAYER	LINE PULL (lbs)		LINE SPEED (fpm)	
	LOW	HIGH	LOW	HIGH
1	50000	25000	28	57
2	41400	20700	34	68
3	35300	17600	40	80
4	30700	15400	46	92
5	27200	13600	52	104

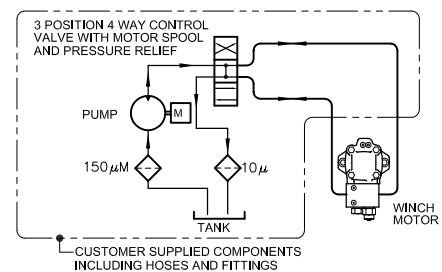
Performance is based on 45 gpm @ 2750 psi with $\varnothing 7/8$ " wire rope.

DRUM CAPACITIES - FT.

LAYER	$\varnothing 7/8$ " WIRE ROPE		
	A	B	C
1	25	37	32
2	55	81	70
3	90	134	115
4	131	194	166
5	177	261	224*

Drum capacities are in accordance with SAE J706.
Actual capacities are usually up to 10% greater than those shown.
* Layer does not meet SAE J706.

TYPICAL HYDRAULIC SYSTEM



The rated line pulls are for the winch only. Consult the wire rope manufacturer for wire rope ratings.

Because of continued product improvement, we reserve the right to make changes without notice.

⚠ WARNING	⚠ CAUTION
Winches are not intended to be used for the lifting or moving of persons.	The last 5 wraps cable must be left on the drum to assist the cable clamp in holding the load.

dp Winch is a part of the Tulsa Winch Group, a worldwide provider of winch systems and electronic load information systems.

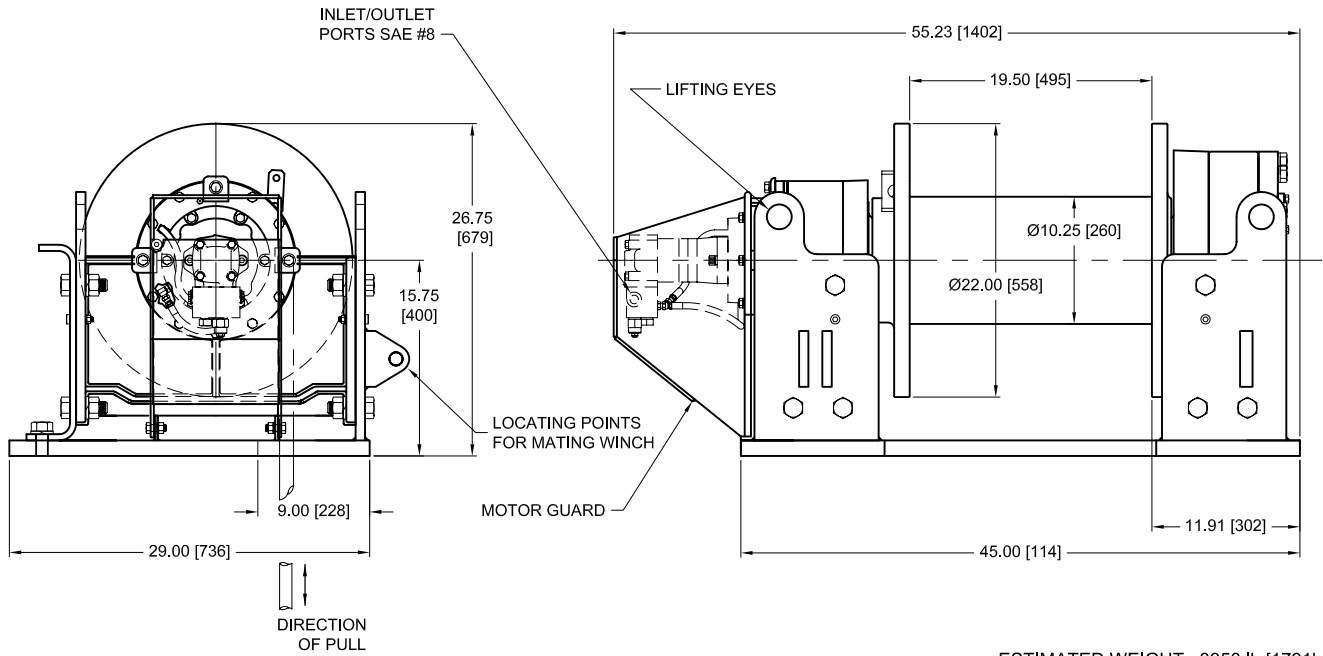
P.O.Box 1130
Jenks, OK 74037-1130
Voice: 918-298-8300
Fax: 918-298-8301
www.dpwinch.com





Model BP50

50,000 lb. [222.4 kN]



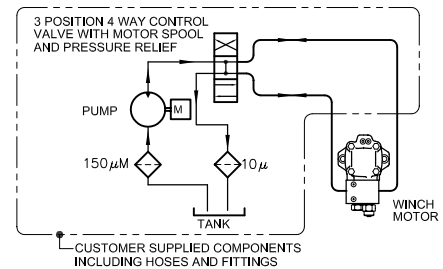
ESTIMATED WEIGHT: 3950 lb [1791kg]
DUAL DIMENSIONED-INCHES [mm]

PERFORMANCE DATA

LAYER	LINE PULL		LINE SPEED		DRUM CAPACITY	
	lbs.	kN	fpm	mpm	ft.	m
1	50,000	222.4	12	3.6	46	14.0
2	41,700	185.4	14	4.2	102	31.0
3	35,800	159.2	17	5.1	167	50.9
4	31,400	139.6	19	5.7	241	73.4
5	27,900	124.0	21	6.4	324	98.7

Performance is based on 20 gpm [75 l/min] @ 2600 psi [179bars] with Ø1 1/8 [28.6mm] wire rope.

TYPICAL HYDRAULIC SYSTEM



The rated line pulls are for the winch only. Consult API RP 9B, section 3.3.3.D and API Specification 7K, section 9.13.3.13 for information on rope selection of BOP handling system winches.

Contact your dp sales representative for additional options and features not shown.

Because of continued product improvement, we reserve the right to make changes without notice.

⚠ WARNING	⚠ CAUTION
Winches are not intended to be used for the lifting or moving of persons.	The last 5 wraps cable must be left on the drum to assist the cable clamp in holding the load.

dp Winch is a brand of TWG, a world class manufacturer of integrated gearing and electronic

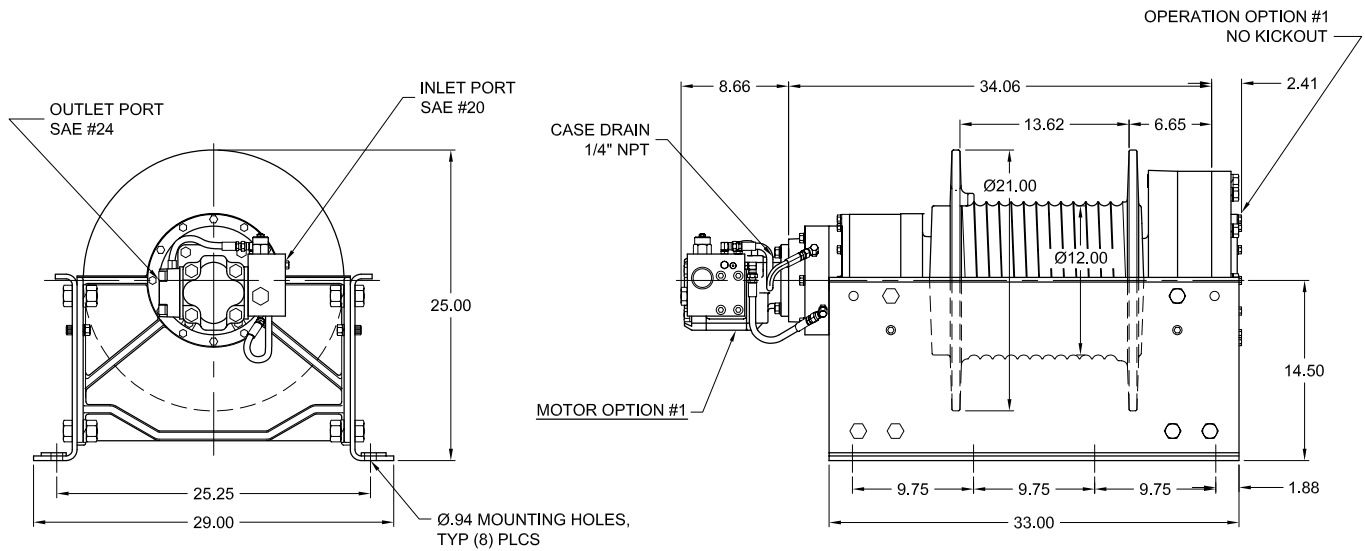
P.O.Box 1130
Jenks, OK 74037-1130
Voice: 918-298-8300
Fax: 918-298-8301
www.dpwinch.com





Model 55

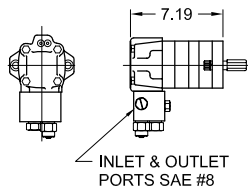
55,000 lb.



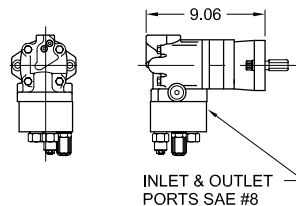
APPROX. WEIGHT: 1450 lb.

OPTIONAL FEATURES

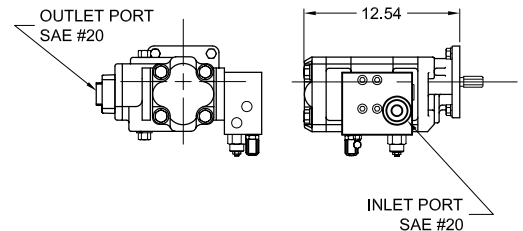
MOTOR OPTION #2
LOW FLOW MOTOR



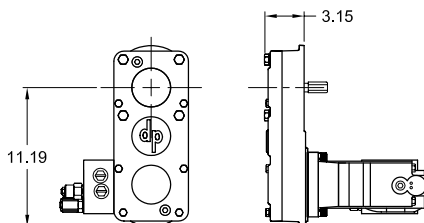
MOTOR OPTION #3 & 9
LOW FLOW 2 SPEED MOTOR



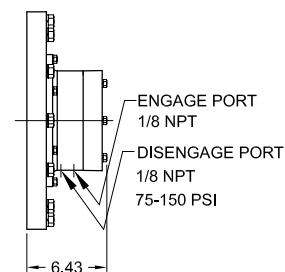
MOTOR OPTION #7 & 8
HIGH FLOW 2 SPEED MOTOR



MOTOR OPTIONS #4, 5, & 6
DROP BOX



OPERATION OPTION #4
AIR/HYD. KICKOUT



Contact your dp sales representative for additional options and features not shown.

Because of continued product improvement, we reserve the right to make changes without notice.

⚠ WARNING	⚠ CAUTION
Winches are not intended to be used for the lifting or moving of persons.	The last 5 wraps cable must be left on the drum to assist the cable clamp in holding the load.

dp Winch is a part of the Tulsa Winch Group, a worldwide provider of winch systems and electronic load information systems.

P.O.Box 1130
Jenks, OK 74037-1130
Voice: 918-298-8300
Fax: 918-298-8301
www.dpwinch.com





Model 55

55,000 lb.

MOTOR OPTIONS #1 & 4 - HIGH FLOW

LAYER	LINE PULL (lbs)	LINE SPEED (fpm)
1	55000	36
2	47700	42
3	42100	47
4	37600	53

Performance is based on 60 gpm @ 2900 psi with Ø1" wire rope.

MOTOR OPTIONS #2 & 5 - LOW FLOW

LAYER	LINE PULL (lbs)	LINE SPEED (fpm)
1	55000	16
2	47700	18
3	42100	20
4	37600	23

Performance is based on 25 gpm @ 3000 psi with Ø1" wire rope.

2 SPEED MOTOR OPTIONS #3, 6, & 9 - LOW FLOW

LAYER	LINE PULL (lbs)		LINE SPEED (fpm)	
	LOW	HIGH	LOW	HIGH
1	55000	27500	12	25
2	47700	23850	14	29
3	42100	21050	16	33
4	37600	18800	18	37

Performance is based on 20 gpm @ 3000 psi with Ø1" wire rope.

2 SPEED MOTOR OPTIONS #7 & 8 - HIGH FLOW

LAYER	LINE PULL (lbs)		LINE SPEED (fpm)	
	LOW	HIGH	LOW	HIGH
1	55000	27500	27	54
2	47700	23800	31	62
3	42100	21000	35	71
4	37600	18800	39	79

Performance is based on 45 gpm @ 2900 psi with Ø1" wire rope.

DRUM CAPACITIES - FT.

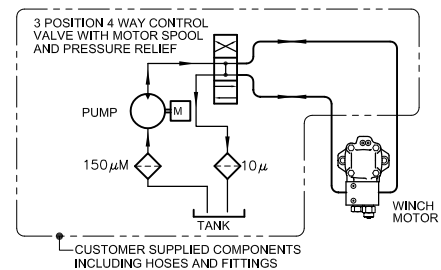
LAYER	Ø7/8" WIRE ROPE	Ø1" WIRE ROPE
1	47	42
2	101	90
3	161	144
4	227	205*
5	300*	-

Drum capacities are in accordance with SAE J706.

Actual capacities are usually up to 10% greater than those shown.

* Layer does not meet SAE J706.

TYPICAL HYDRAULIC SYSTEM



The rated line pulls are for the winch only. Consult the wire rope manufacturer for wire rope ratings.

Because of continued product improvement, we reserve the right to make changes without notice.

⚠ WARNING	⚠ CAUTION
Winches are not intended to be used for the lifting or moving of persons.	The last 5 wraps cable must be left on the drum to assist the cable clamp in holding the load.

dp Winch is a part of the Tulsa Winch Group, a worldwide provider of winch systems and electronic load information systems.

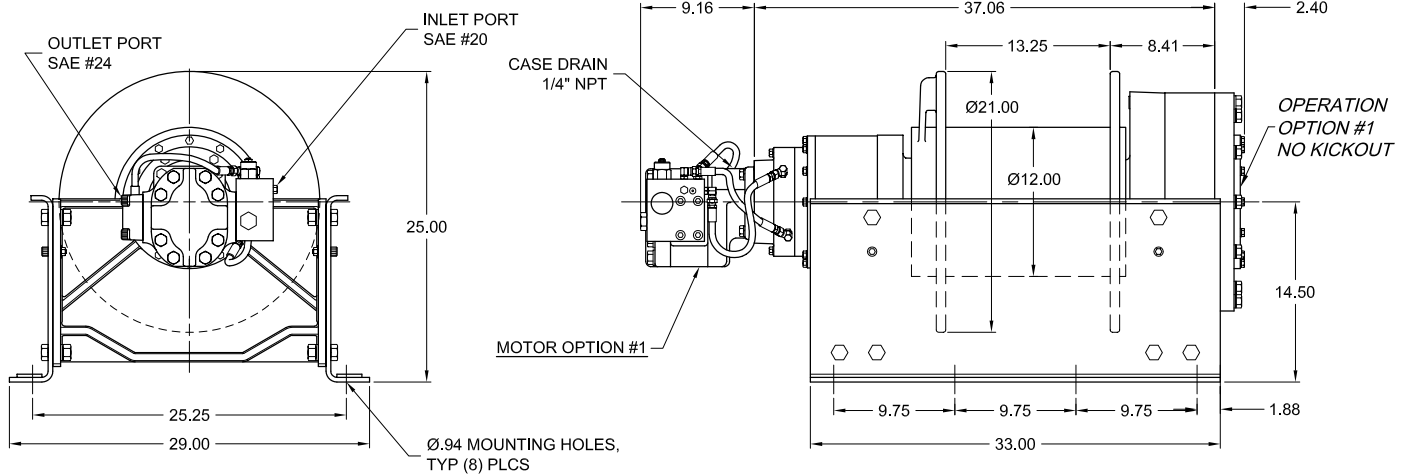
P.O. Box 1130
Jenks, OK 74037-1130
Voice: 918-298-8300
Fax: 918-298-8301
www.dpwinch.com





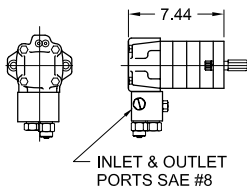
Model 65

65,000 lb.

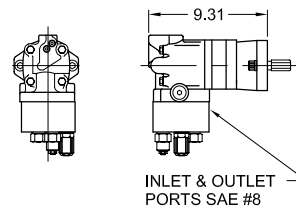


OPTIONAL FEATURES

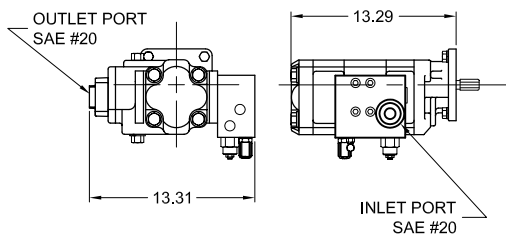
MOTOR OPTION #2
LOW FLOW MOTOR



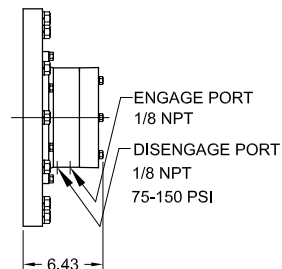
MOTOR OPTION #3 & 9
LOW FLOW 2 SPEED MOTOR



MOTOR OPTION #7 & 8
HIGH FLOW 2 SPEED MOTOR



OPERATION OPTION #4
AIR/HYD. KICKOUT



Contact your dp sales representative for additional options and features not shown.

Because of continued product improvement, we reserve the right to make changes without notice.

⚠ WARNING	⚠ CAUTION
Winches are not intended to be used for the lifting or moving of persons.	The last 5 wraps cable must be left on the drum to assist the cable clamp in holding the load.

dp Winch is a part of the Tulsa Winch Group, a worldwide provider of winch systems and electronic load information systems.

P.O.Box 1130
Jenks, OK 74037-1130
Voice: 918-298-8300
Fax: 918-298-8301
www.dpwinch.com





Model 65

65,000 lb.

MOTOR OPTION #1 - HIGH FLOW

LAYER	LINE PULL (lbs)	LINE SPEED (fpm)
1	65000	28
2	56300	32
3	49700	36
4	44500	40

Performance is based on 60 gpm @ 2700 psi with Ø1" wire rope.

MOTOR OPTION #2 - LOW FLOW

LAYER	LINE PULL (lbs)	LINE SPEED (fpm)
1	65000	13
2	56300	14
3	49700	16
4	44500	18

Performance is based on 25 gpm @ 2800 psi with Ø1" wire rope.

2 SPEED MOTOR OPTIONS #3 & 9 - LOW FLOW

LAYER	LINE PULL (lbs)		LINE SPEED (fpm)	
	LOW	HIGH	LOW	HIGH
1	65000	32500	12	24
2	56300	28200	14	28
3	49700	24900	16	31
4	44500	22200	18	35

Performance is based on 24 gpm @ 2800 psi with Ø1" wire rope.

2 SPEED MOTOR OPTIONS #7 & 8 - HIGH FLOW

LAYER	LINE PULL (lbs)		LINE SPEED (fpm)	
	LOW	HIGH	LOW	HIGH
1	65000	30000	27	59
2	56300	26000	32	68
3	49700	22900	36	78
4	44500	20500	40	87

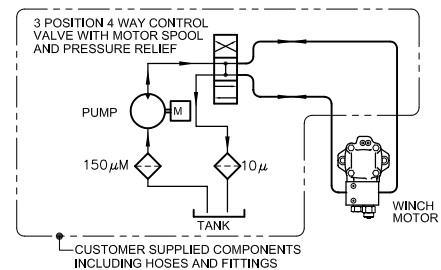
Performance is based on 60 gpm @ 2700 psi with Ø1" wire rope.

DRUM CAPACITIES - FT.

LAYER	Ø1" WIRE ROPE	Ø1 1/8" WIRE ROPE
1	41	36
2	87	79
3	140	128
4	200*	183*

Drum capacities are in accordance with SAE J706.
Actual capacities are usually up to 10% greater than those shown.
* Layer does not meet SAE J706.

TYPICAL HYDRAULIC SYSTEM



The rated line pulls are for the winch only. Consult the wire rope manufacturer for wire rope ratings.

Because of continued product improvement, we reserve the right to make changes without notice.

⚠ WARNING	⚠ CAUTION
Winches are not intended to be used for the lifting or moving of persons.	The last 5 wraps cable must be left on the drum to assist the cable clamp in holding the load.

dp Winch is a part of the Tulsa Winch Group, a worldwide provider of winch systems and electronic load information systems.

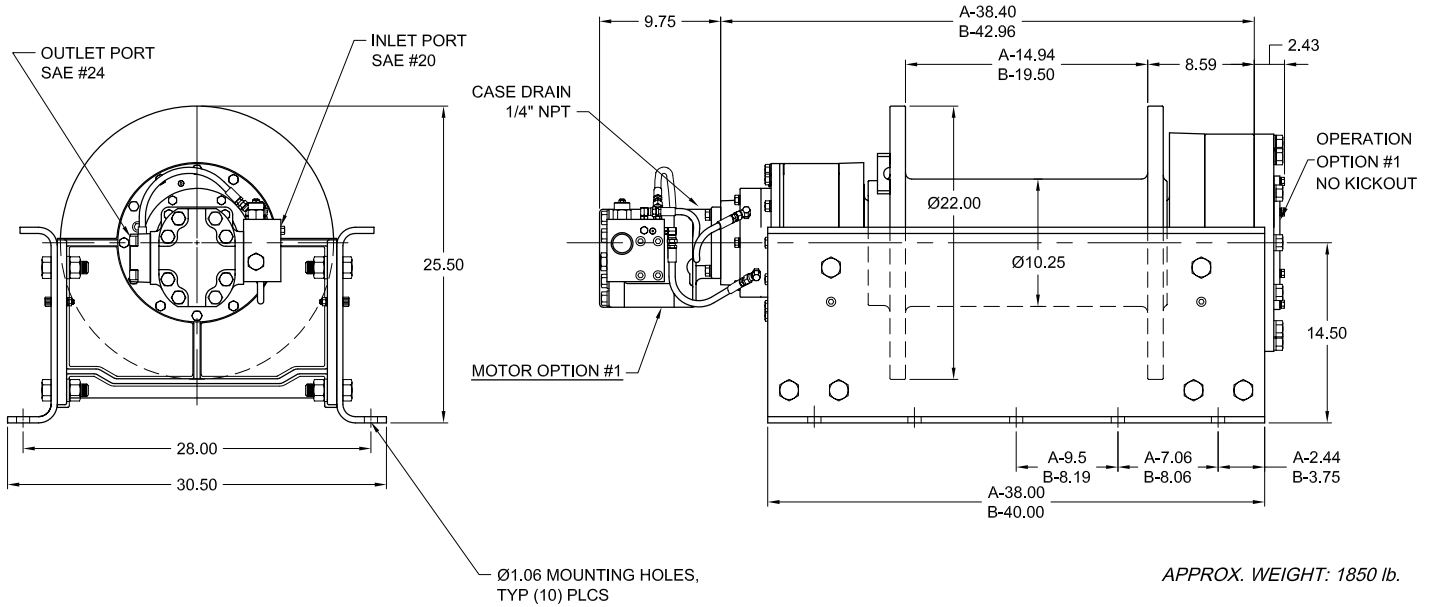
P.O.Box 1130
Jenks, OK 74037-1130
Voice: 918-298-8300
Fax: 918-298-8301
www.dpwinch.com





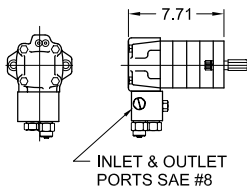
Model 100

100,000 lb.

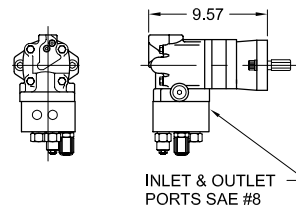


OPTIONAL FEATURES

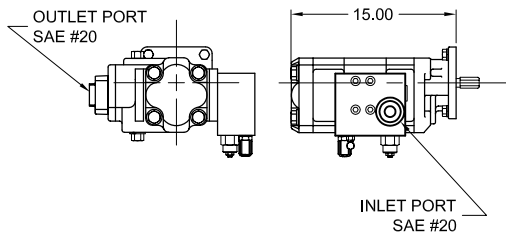
MOTOR OPTION #2
LOW FLOW MOTOR



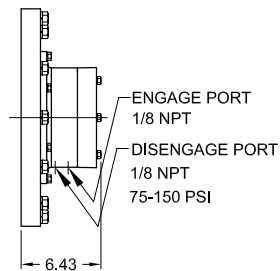
MOTOR OPTION #3 & 9
LOW FLOW 2 SPEED MOTOR



MOTOR OPTION #7 & 8
HIGH FLOW 2 SPEED MOTOR



OPERATION OPTION #4
AIR/HYD. KICKOUT



Contact your dp sales representative for additional options and features not shown.

Because of continued product improvement, we reserve the right to make changes without notice.

⚠ WARNING	⚠ CAUTION
Winches are not intended to be used for the lifting or moving of persons.	The last 5 wraps cable must be left on the drum to assist the cable clamp in holding the load.

dp Winch is a part of the Tulsa Winch Group, a worldwide provider of winch systems and electronic load information systems.

P.O.Box 1130
Jenks, OK 74037-1130
Voice: 918-298-8300
Fax: 918-298-8301
www.dpwinch.com





Model 100

100,000 lb.

MOTOR OPTION #1 - HIGH FLOW

LAYER	LINE PULL (lbs)	LINE SPEED (fpm)
1	100000	18
2	82100	22
3	69700	25
4	60500	29

Performance is based on 60 gpm @ 2500 psi with Ø1 1/4" wire rope.

MOTOR OPTION #2 - LOW FLOW

LAYER	LINE PULL (lbs)	LINE SPEED (fpm)
1	100000	8
2	82100	10
3	69700	11
4	60500	13

Performance is based on 25 gpm @ 2800 psi with Ø1 1/4" wire rope.

2 SPEED MOTOR OPTIONS #3 & 9 - LOW FLOW

LAYER	LINE PULL (lbs)		LINE SPEED (fpm)	
	LOW	HIGH	LOW	HIGH
1	100000	50000	8	16
2	82100	41100	10	19
3	69700	34800	11	23
4	60500	30300	13	26

Performance is based on 25 gpm @ 2800 psi with Ø1 1/4" wire rope.

2 SPEED MOTOR OPTIONS #7 & 8 - HIGH FLOW

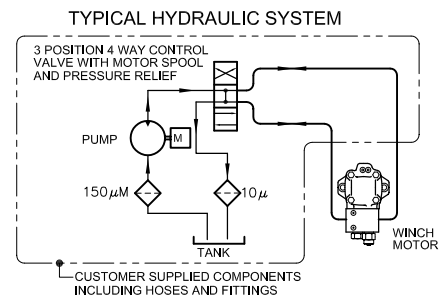
LAYER	LINE PULL (lbs)		LINE SPEED (fpm)	
	LOW	HIGH	LOW	HIGH
1	100000	50000	17	35
2	82100	41100	21	42
3	69700	34800	25	50
4	60500	30300	29	57

Performance is based on 60 gpm @ 2500 psi with Ø1 1/4" wire rope.

DRUM CAPACITIES - FT.

LAYER	Ø1 1/4" WIRE ROPE	
	A	B
1	32	42
2	72	94
3	118	154
4	172	224

Drum capacities are in accordance with SAE J706. Actual capacities are usually up to 10% greater than those shown.



The rated line pulls are for the winch only. Consult the wire rope manufacturer for wire rope ratings.

Because of continued product improvement, we reserve the right to make changes without notice.

⚠ WARNING	⚠ CAUTION
Winches are not intended to be used for the lifting or moving of persons.	The last 5 wraps cable must be left on the drum to assist the cable clamp in holding the load.

dp Winch is a part of the Tulsa Winch Group, a worldwide provider of winch systems and electronic load information systems.

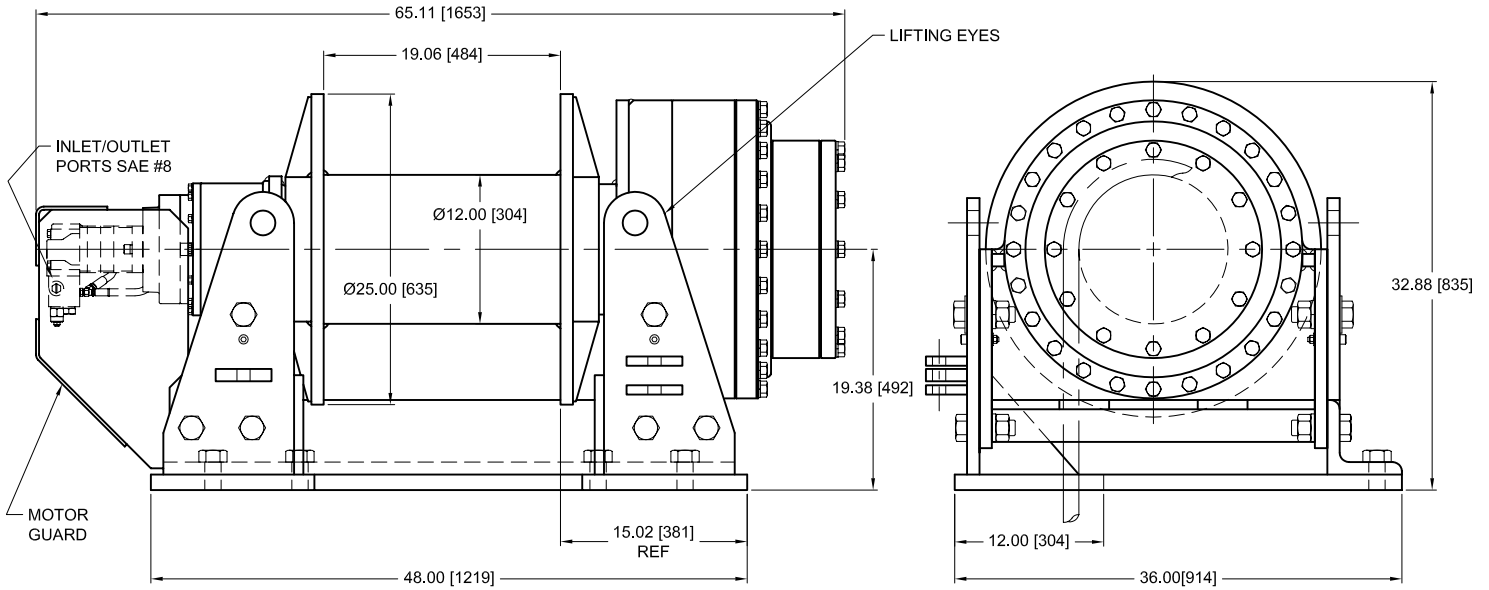
P.O.Box 1130
Jenks, OK 74037-1130
Voice: 918-298-8300
Fax: 918-298-8301
www.dpwinch.com





Model BP100

100,000 lb [444.8 kN]



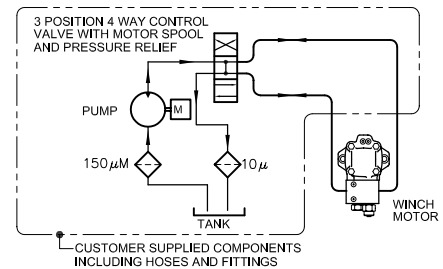
ESTIMATED WEIGHT: 3950 lb [1791kg]
DUAL DIMENSIONED-INCHES [mm]

PERFORMANCE DATA

LAYER	LINE PULL		LINE SPEED		DRUM CAPACITY	
	lbs.	kN	fpm	mpm	ft.	m
1	100,000	444.8	6	1.8	48	14.6
2	85,100	378.5	8	2.4	104	31.6
3	72,600	322.9	9	2.7	170	51.8
4	63,900	284.2	10	3.0	244	74.3
5	57,000	253.5	11	3.3	328	99.9

Performance is based on 20 gpm [75 l/min] @ 2750 psi [189bars] with $\varnothing 1 \frac{1}{4}$ [31.6mm] wire rope.

TYPICAL HYDRAULIC SYSTEM



The rated line pulls are for the winch only. Consult API RP 9B, section 3.3.3.D and API Specification 7K, section 9.13.3.13 for information on rope selection of BOP handling system winches.

Contact your dp sales representative for additional options and features not shown.

Because of continued product improvement, we reserve the right to make changes without notice.

⚠ WARNING	⚠ CAUTION
Winches are not intended to be used for the lifting or moving of persons.	The last 5 wraps cable must be left on the drum to assist the cable clamp in holding the load.

dp Winch is a brand of TWG, a world class manufacturer of integrated gearing and electronic

P.O.Box 1130
Jenks, OK 74037-1130
Voice: 918-298-8300
Fax: 918-298-8301
www.dpwinch.com

