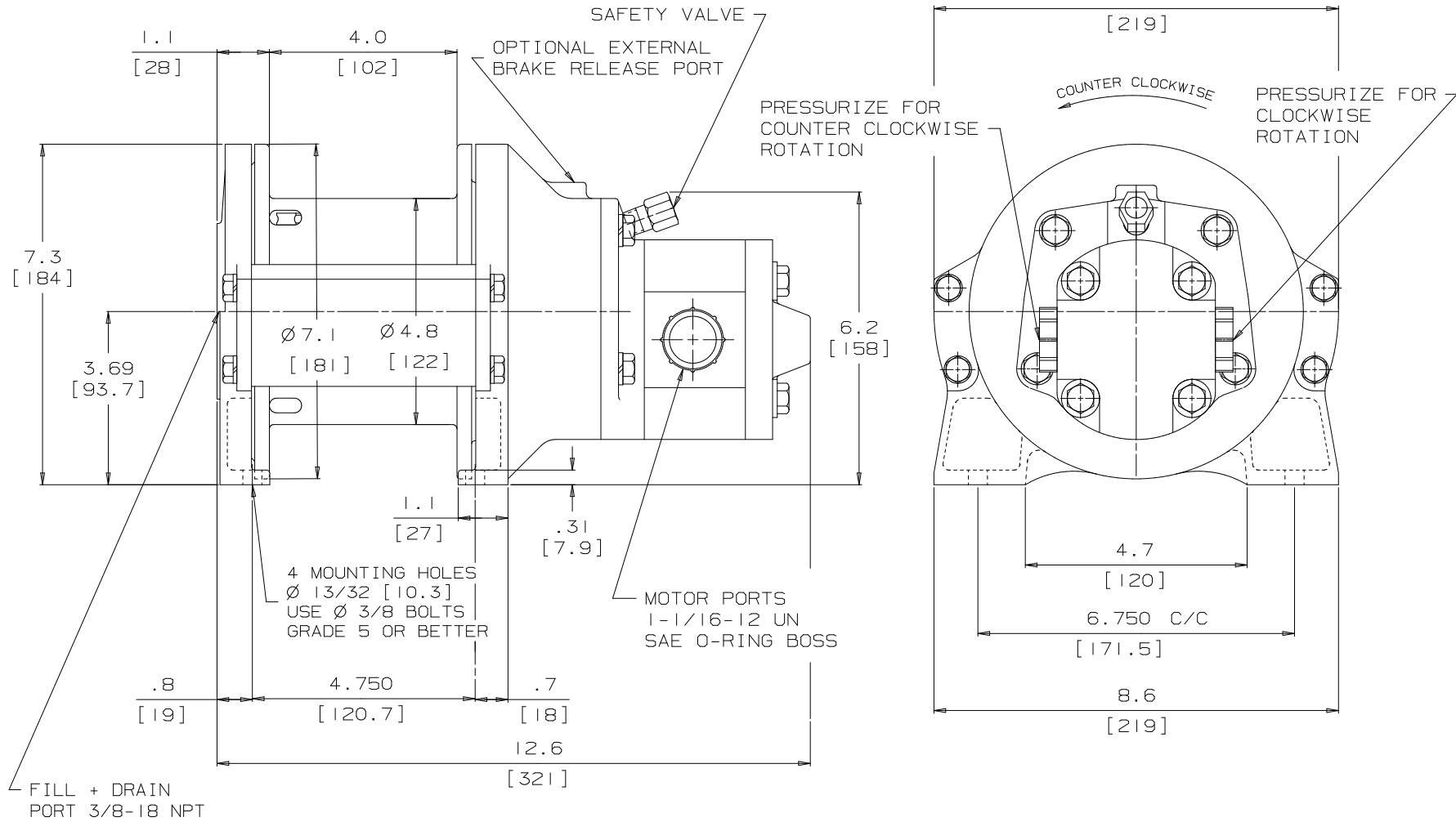
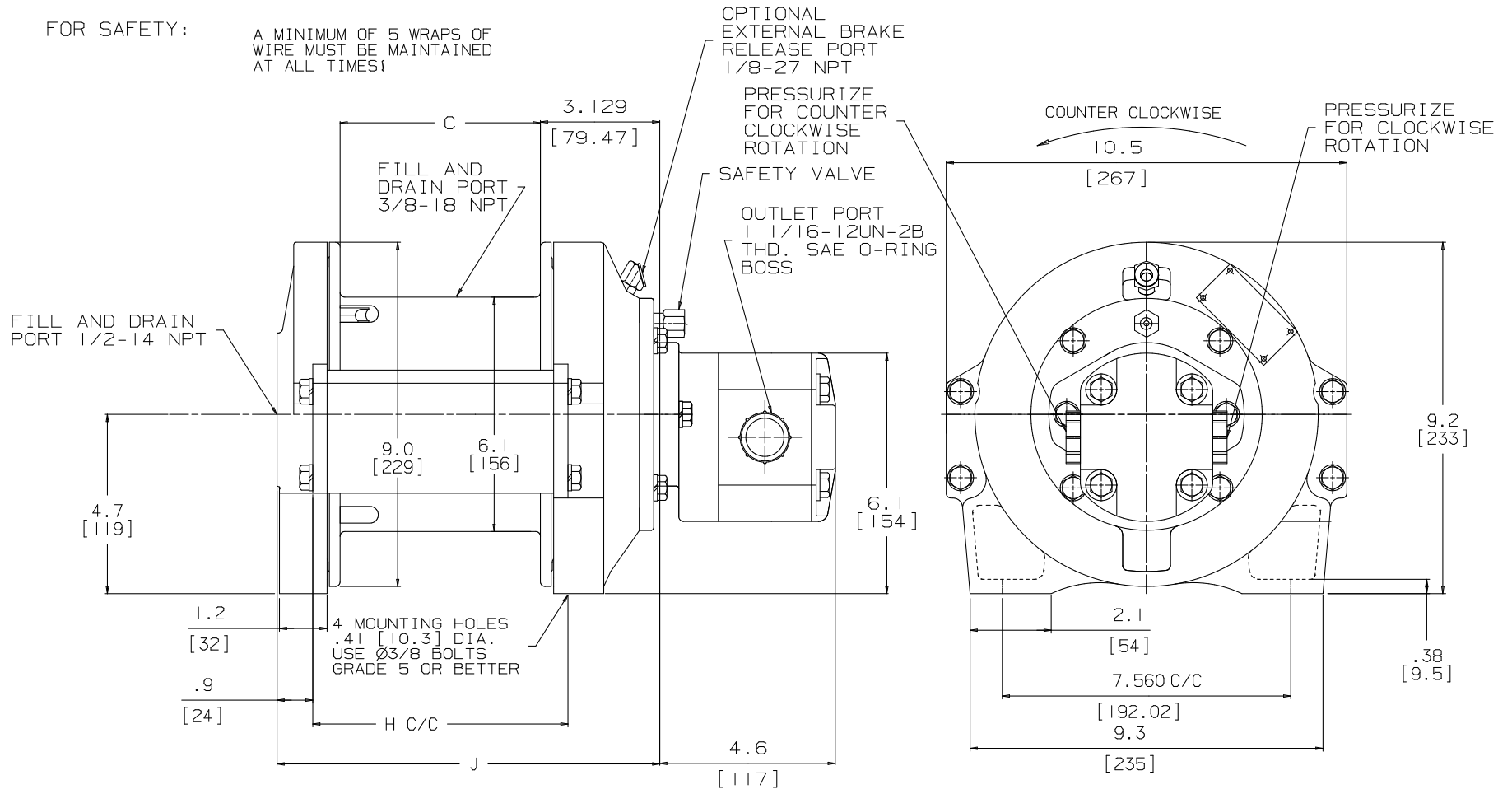


STANDARD CABLE ANCHOR IS
SUITABLE FOR 1/8" - 1/4"
DIA WIRE ROPE

FOR SAFETY: A MINIMUM OF 5 WRAPS OF
WIRE ROPE MUST BE MAINTAINED
AT ALL TIMES !



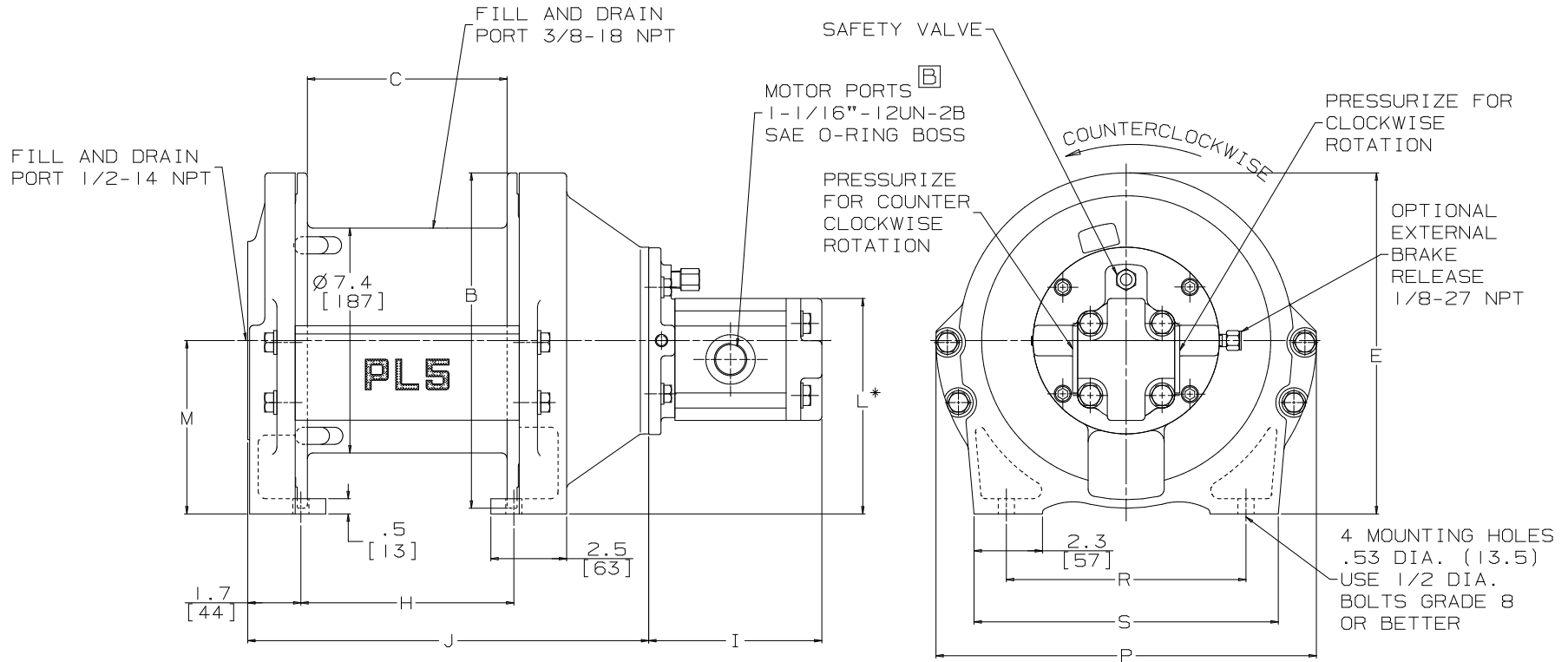


STANDARD CABLE ANCHOR IS SUITABLE FOR 1/4 - 3/8" DIA WIRE ROPE

DRUM CODE	C	H	J	UNITS	MOTOR MODEL
-1	5.3 133	6.688 169.88	10.1 257	in. mm	-228 PARKER 14CC
-5	10.8 275	12.250 311.15	15.6 397	in. mm	

FOR SAFETY : A MINIMUM OF 5 WRAP OF WIRE ROPE
MUST BE MAINTAINED AT ALL TIMES !

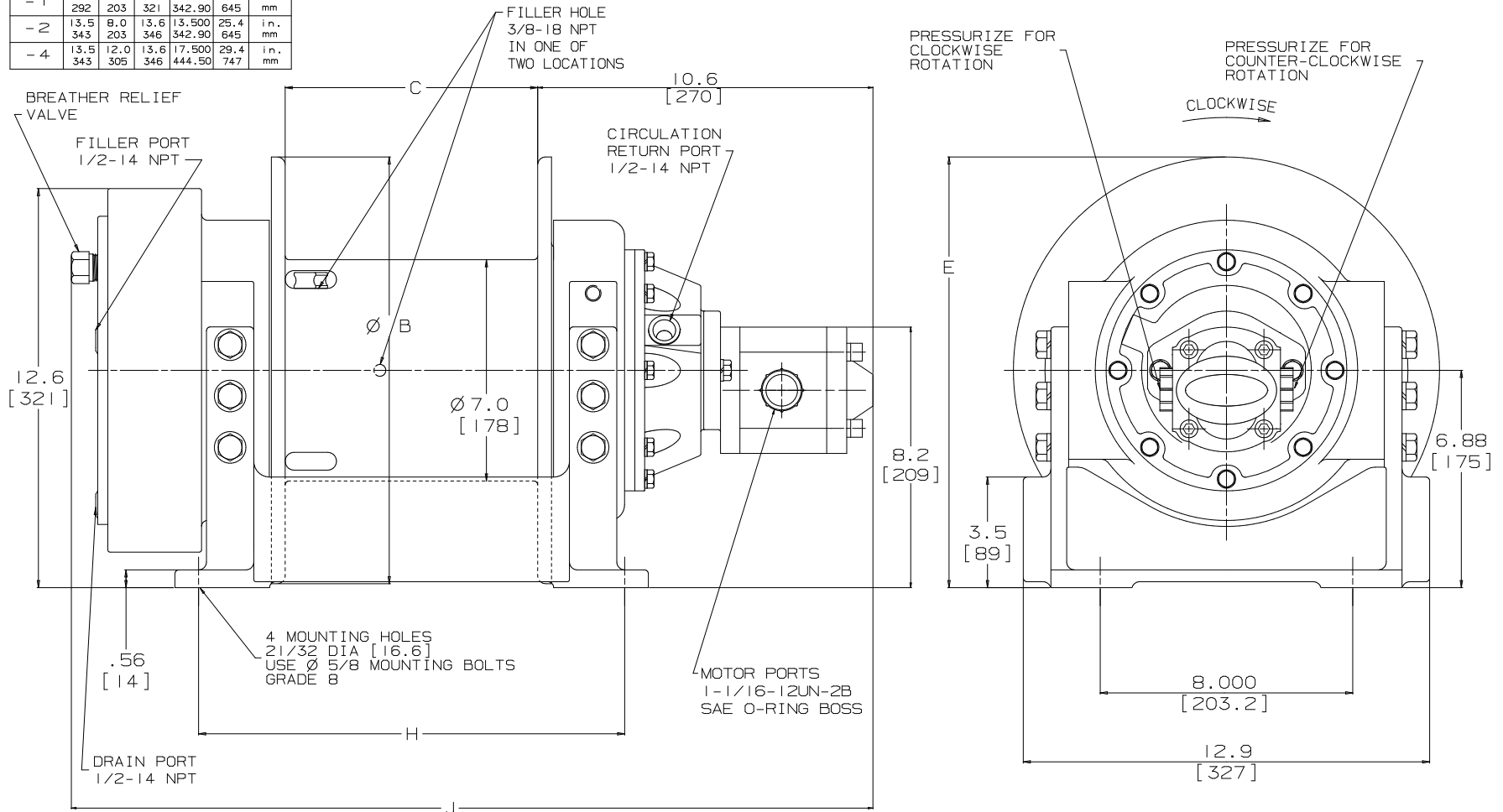
* DIMENSION 'L' SHOWN IS FOR MODELS WITH COUNTERCLOCKWISE HOISTING.
FOR MODELS WITH CLOCKWISE HOISTING, ADD 1.2" (30 MM) TO 'L'



DRUM CODE	B	C	E	H	J	L	M	P	R	S	UNITS
- 1	11.0 279	6.6 167	11.2 284	7.000 177.80	13.2 335	7.1 180	5.69 144	12.5 318	7.875 200.00	10.0 254	in. mm
- 2	12.4 314	6.6 167	12.6 319	7.000 177.80	13.2 335	7.8 197	6.38 162	13.9 352	11.500 292.10	13.6 346	in. mm
- 6	11.0 279	10.0 254	11.2 284	10.435 265.04	16.6 422	7.1 180	5.69 144	12.5 318	7.875 200.00	10.0 254	in. mm

MOTOR CODE	DISPLACEMENT CC / REV	I (in.)	I (mm)
-210	33	5.7	145
-211	27	5.3	135
-212	23	5.1	129
-213	14	4.5	116

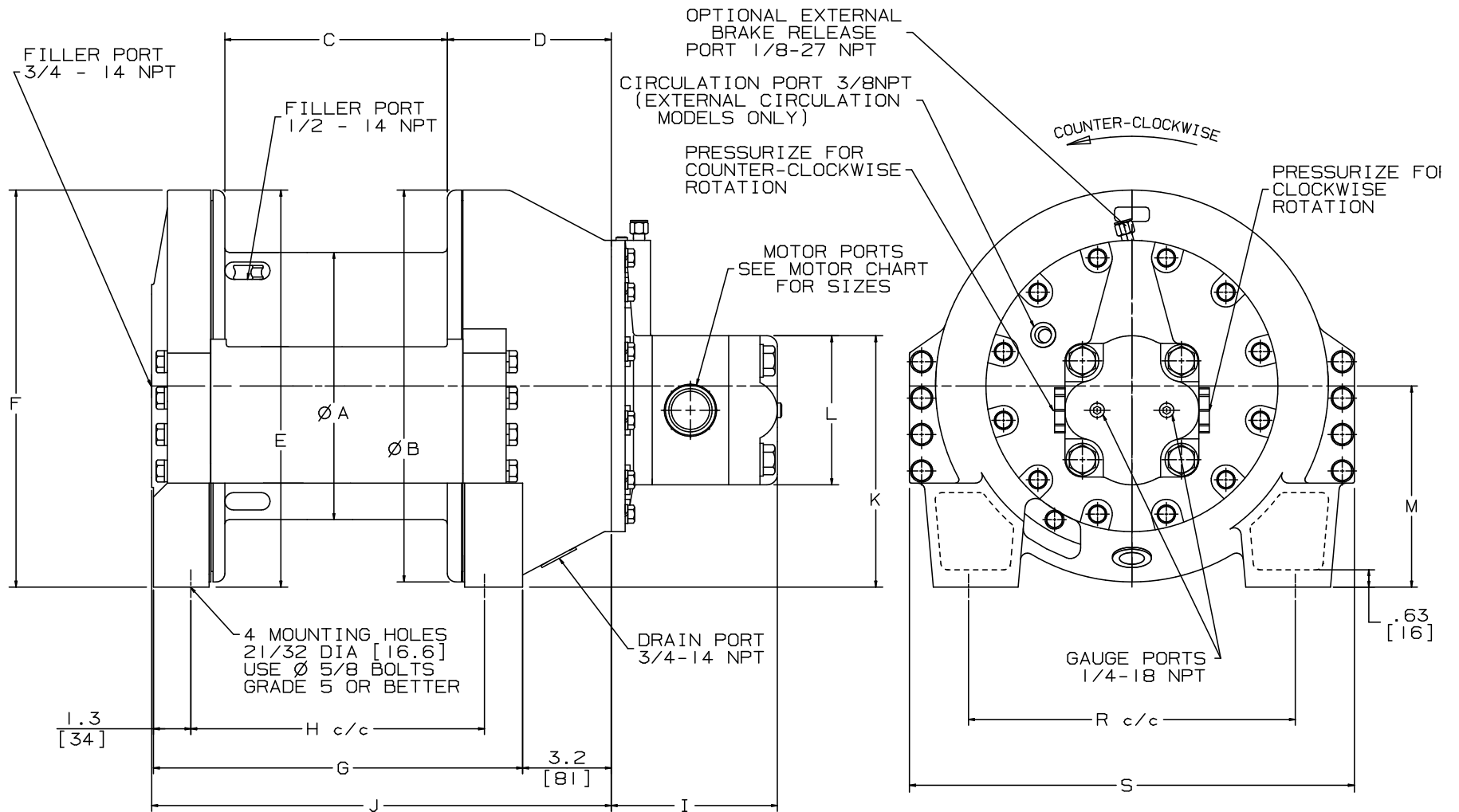
DRUM CODE	B	C	E	H	J	UNITS
- 1	11.5 292	8.0 203	12.6 321	13.500 342.90	25.4 645	in. mm
- 2	13.5 343	8.0 203	13.6 346	13.500 342.90	25.4 645	in. mm
- 4	13.5 343	12.0 305	13.6 346	17.500 444.50	29.4 747	in. mm



STANDARD CABLE ANCHOR IS SUITABLE FOR 1/4 - 1/2" DIA WIRE ROPE

FOR SAFETY:

A MINIMUM OF 5 WRAPS OF WIRE ROPE MUST BE MAINTAINED AT ALL TIMES !



STANDARD CABLE ANCHOR IS SUITABLE FOR 3/8 - 9/16" DIA WIRE ROPE

FOR SAFETY:

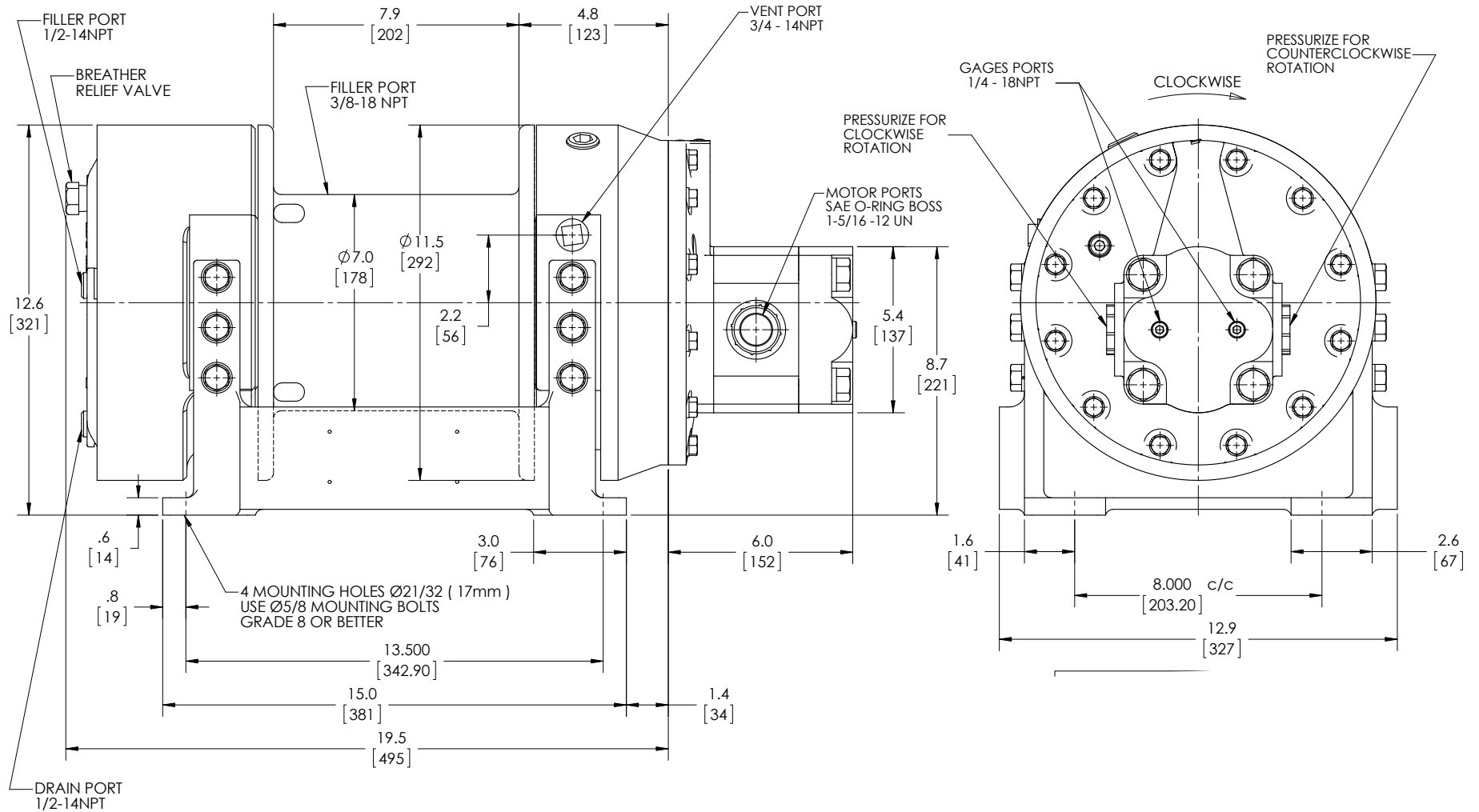
A MINIMUM OF 5 WRAPS OF WIRE ROPE MUST BE MAINTAINED AT ALL TIMES !



H8 & M8

FOR SAFETY: A MINIMUM OF 5 WRAPS OF WIRE ROPE MUST BE MAINTAINED AT ALL TIMES!

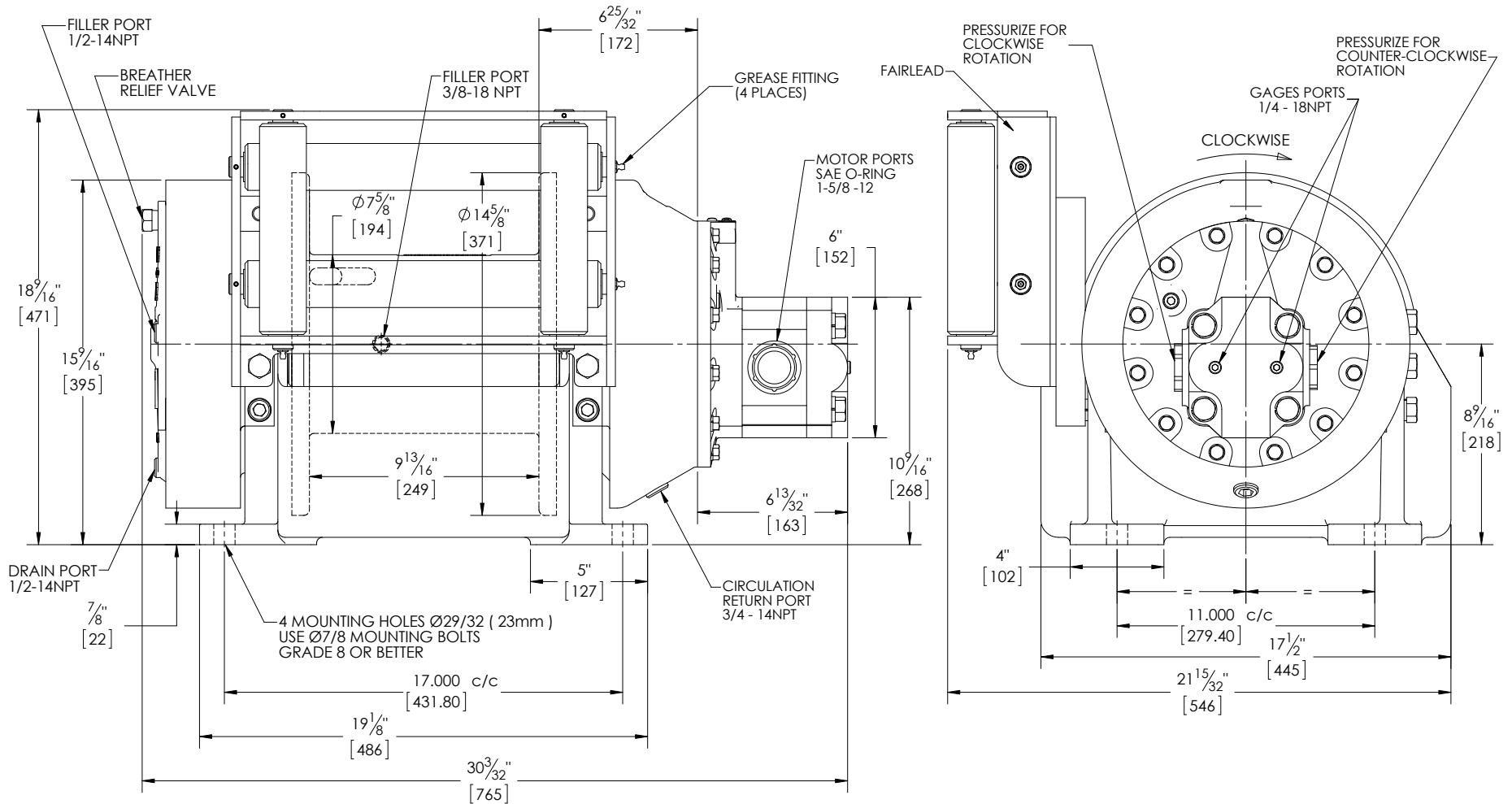
STANDARD CABLE ANCHOR IS SUITABLE FOR 1/4" - 1/2" DIA WIRE ROPE



PART #: IN3401

H12 & M12

FOR SAFETY: A MINIMUM OF 5 WRAPS OF WIRE ROPE MUST BE MAINTAINED AT ALL TIMES!

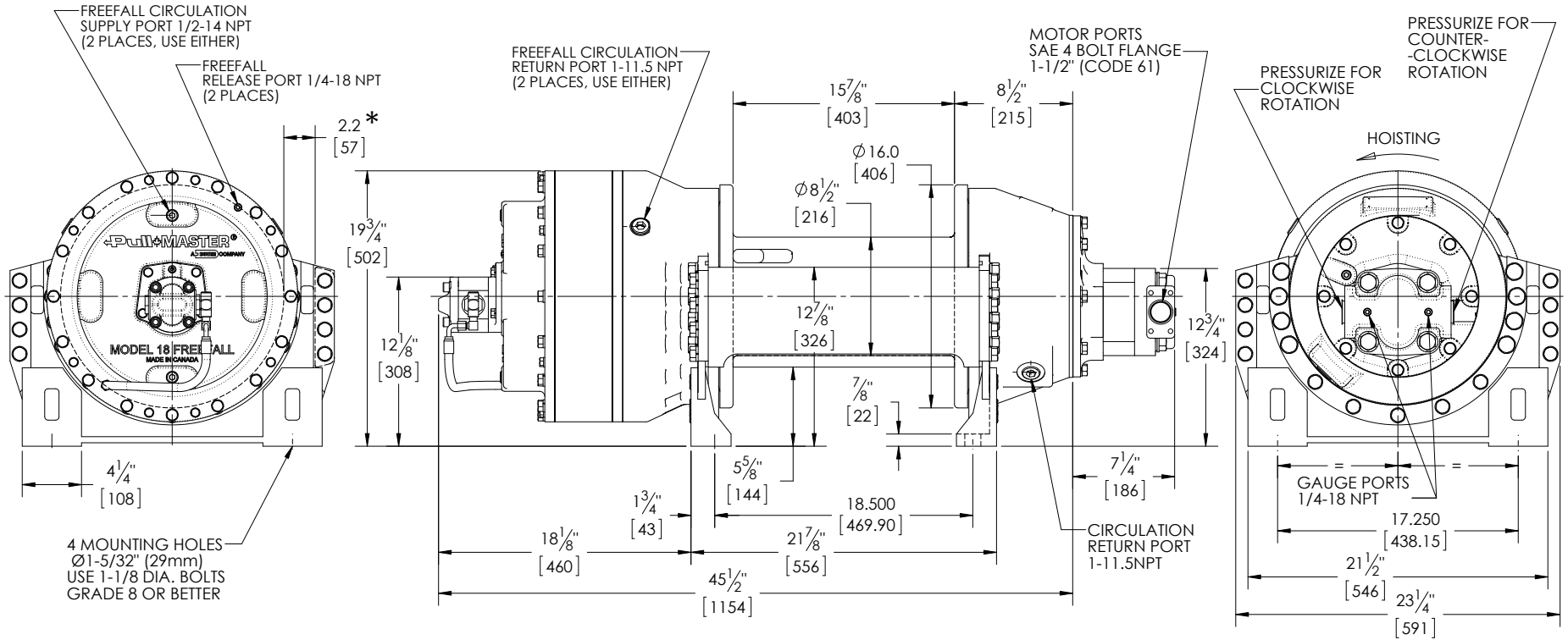


DIMENSIONS ARE IN INCHES [MILLIMETERS]

PART #: IN3459

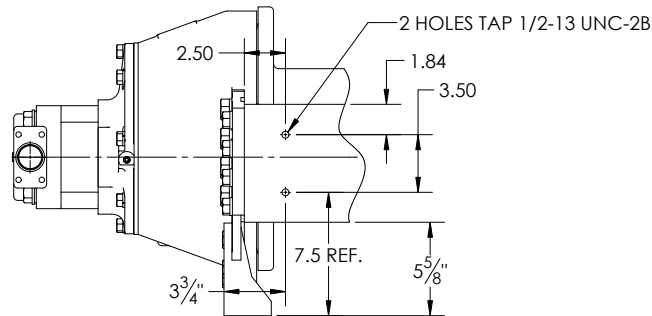
H18 & M18

FOR SAFETY: A MINIMUM OF 5 WRAPS OF WIRE ROPE
MUST BE MAINTAINED AT ALL TIMES !



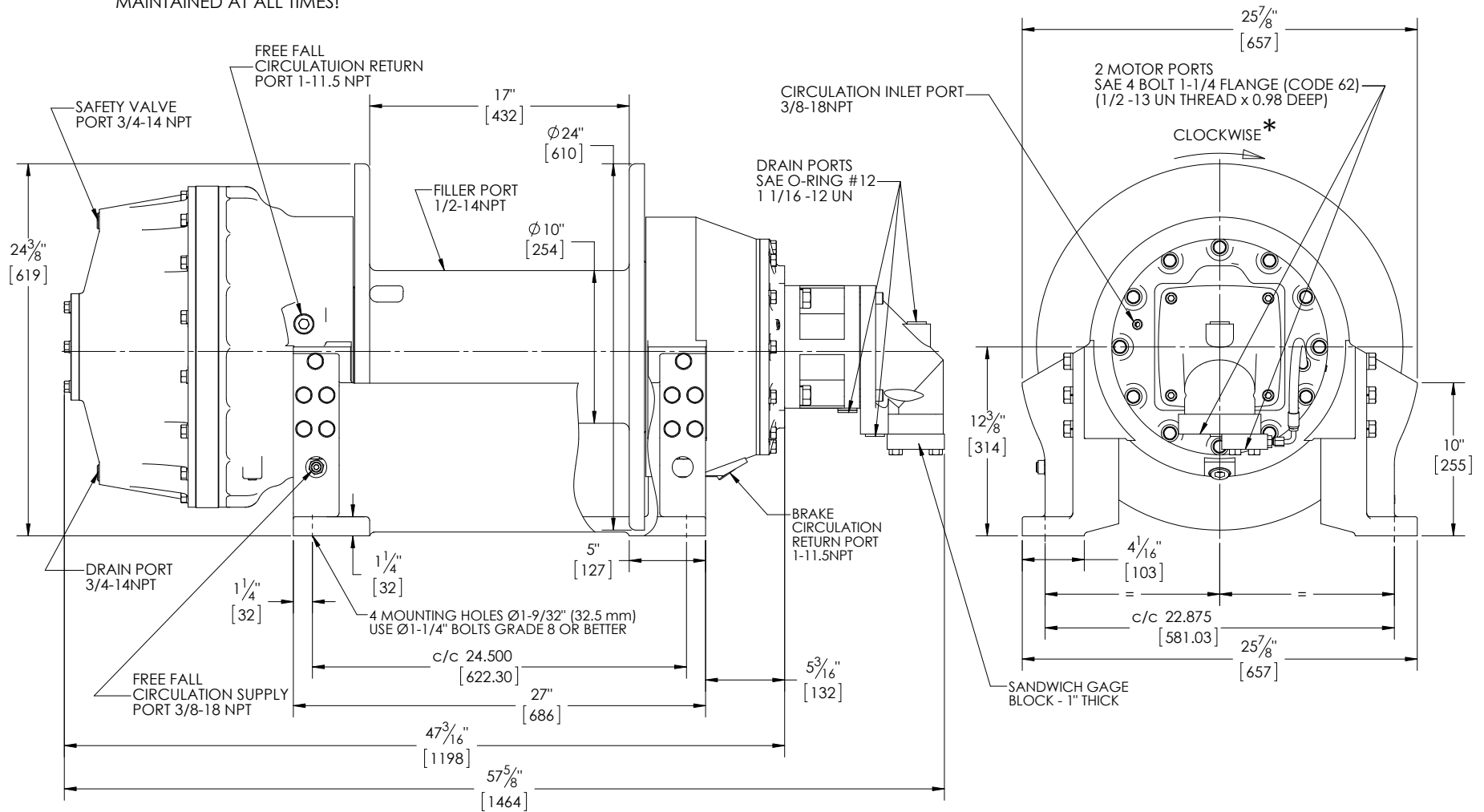
NOTES:

- * - GAP BETWEEN REDUCED FLANGE DIAMETER & TIE BAR
- THE STANDARD CABLE ANCHOR IS SUITABLE FOR 7/16 - 7/8 DIAMETER WIRE ROPE



H25 & M25

FOR SAFETY: A MINIMUM OF 5 WRAPS OF WIRE ROPE UNDER TENSION MUST BE MAINTAINED AT ALL TIMES!

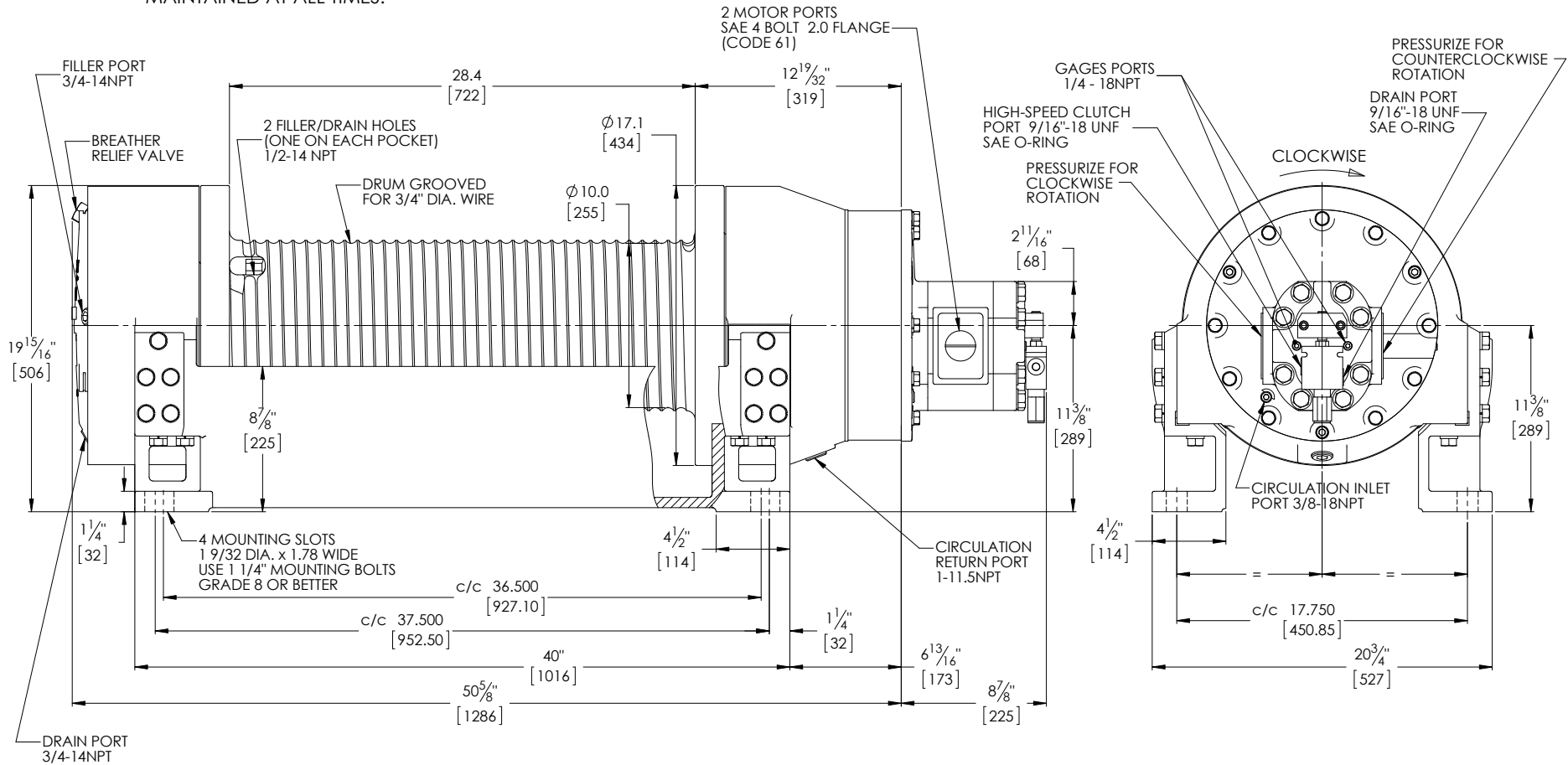


DIMENSIONS ARE IN INCHES [MILLIMETERS]

*DIRECTION OF ROTATION IS ESTABLISHED BY LOOKING AT THE MOTOR

PART #: IN3462

FOR SAFETY: A MINIMUM OF 5 WRAPS OF WIRE ROPE UNDER TENSION MUST BE MAINTAINED AT ALL TIMES!

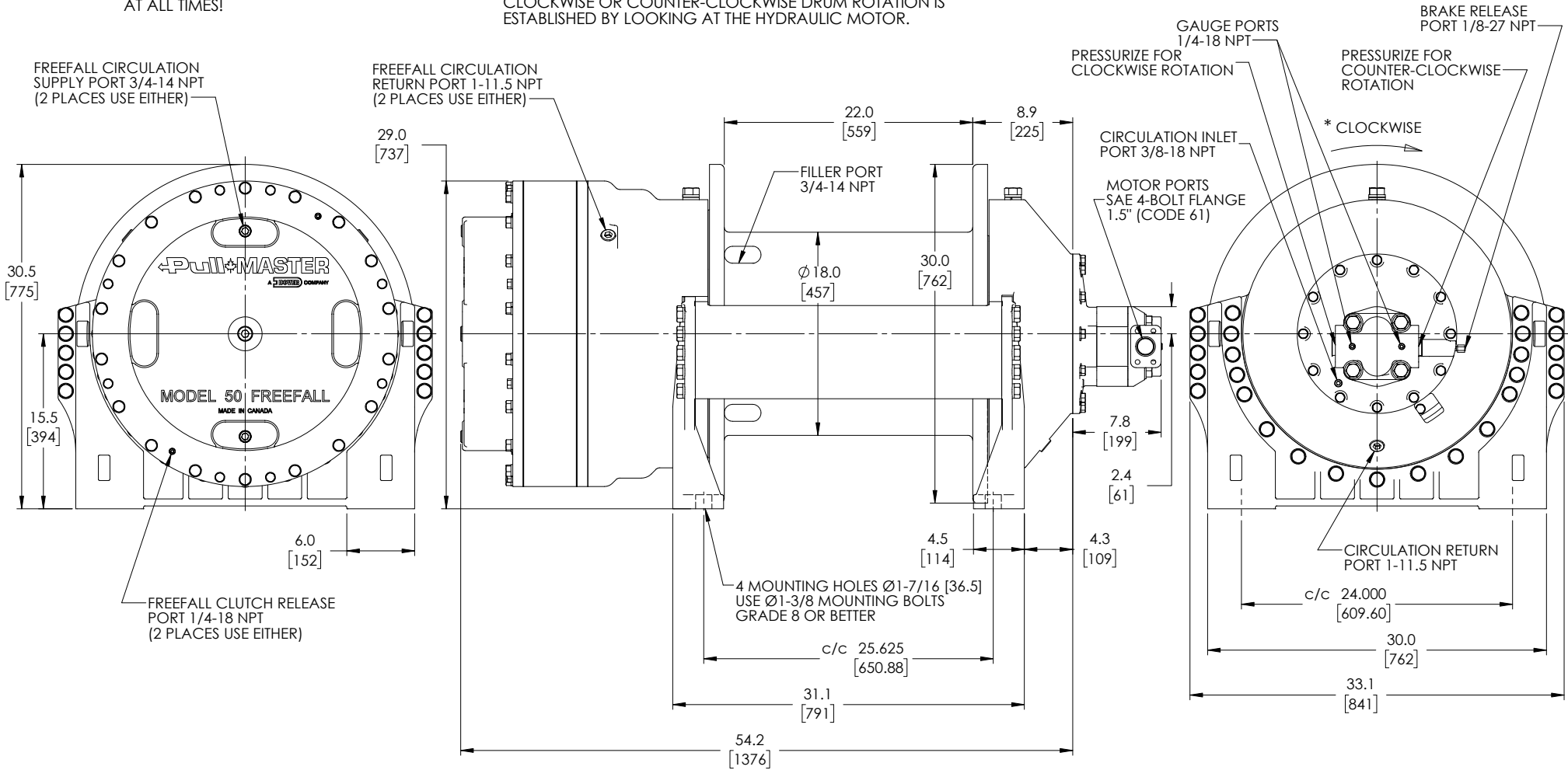


*DIRECTION OF ROTATION IS ESTABLISHED BY LOOKING AT THE MOTOR

H50 & M50

FOR SAFETY: A MINIMUM OF 5 WRAPS OF WIRE ROPE MUST BE MAINTAINED AT ALL TIMES!

* TO ESTABLISH THE DRUM ROTATION FOR HOISTING OR PULLING REFER TO BRAKE CODE (EXPLANATION OF MODEL CODING) CLOCKWISE OR COUNTER-CLOCKWISE DRUM ROTATION IS ESTABLISHED BY LOOKING AT THE HYDRAULIC MOTOR.



H75 & M75

FOR SAFETY:

A MINIMUM OF 5 WRAPS OF WIRE POPE MUST BE MAINTAINED AT ALL TIMES!

*DIRECTION OF ROTATION IS ESTABLISHED BY LOOKING AT THE MOTOR

