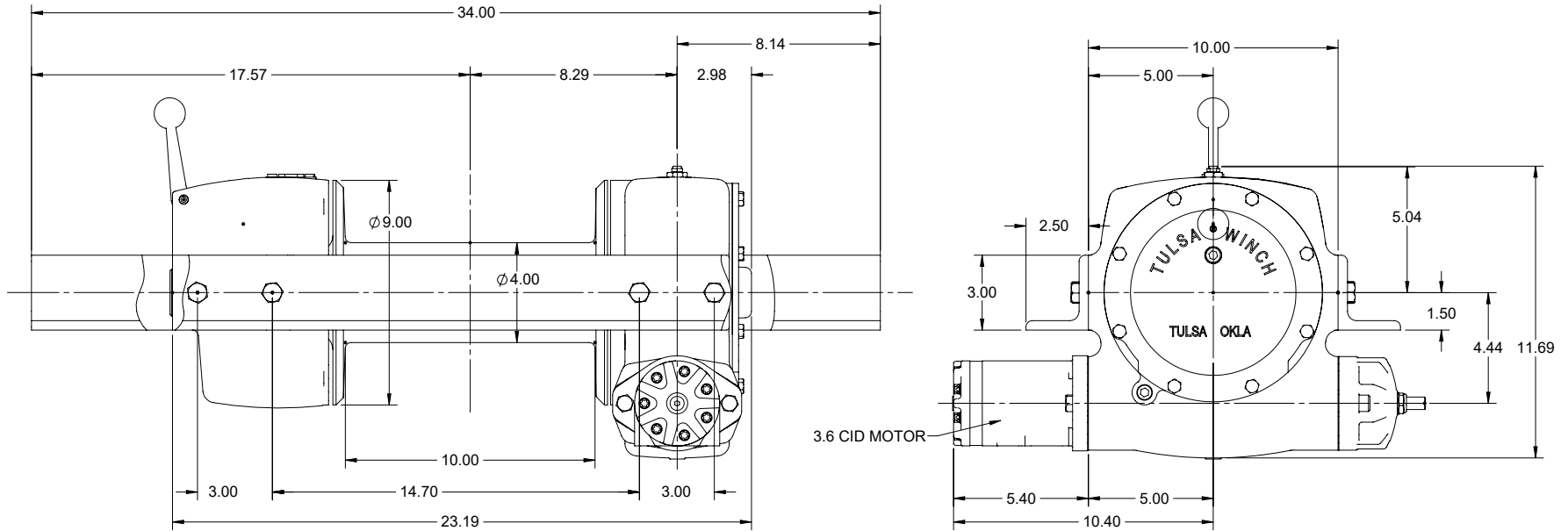


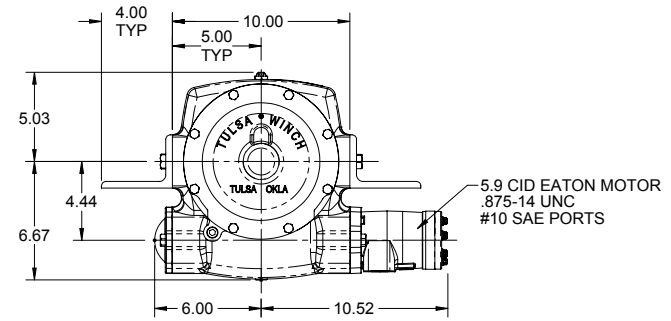
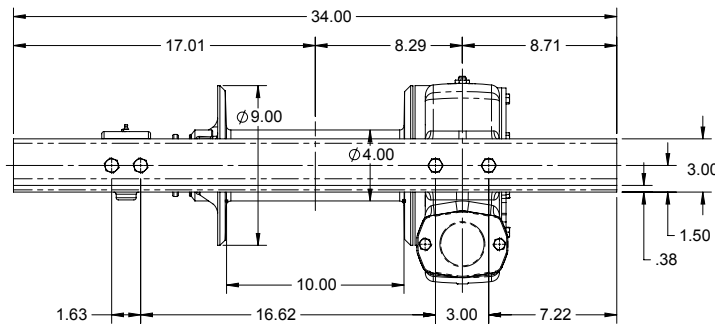
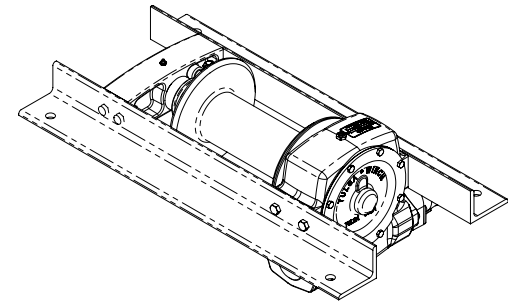
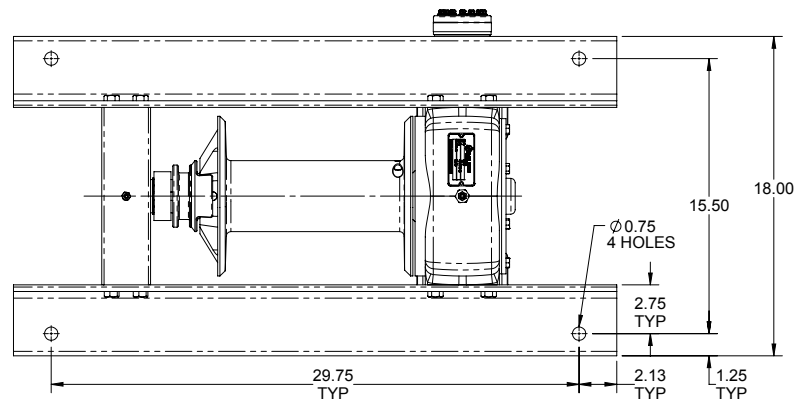


# H1060



| PERFORMANCE DATA - 1060       |            |
|-------------------------------|------------|
| INPUT SPEED (MAX)             | 1,200 RPM  |
| INPUT TORQUE (MAX)            | 793 IN-LBS |
| DYNAMIC EFFICIENCY (GEAR BOX) | 51.3 %     |
| CABLE DIAMETER                | .44        |
| GEAR BOX RATIO                | 60:1       |

| LAYER | LINEPULL POUNDS | LINESPEED FT/MIN | TOTAL CABLE FEET |
|-------|-----------------|------------------|------------------|
| 1     | 11,000          | 23.2             | 23               |
| 2     | 9,188           | 27.8             | 51               |
| 3     | 7,889           | 32.4             | 83               |
| 4     | 6,911           | 37.0             | 119              |
| 5     | 6,149           | 41.6             | 160              |

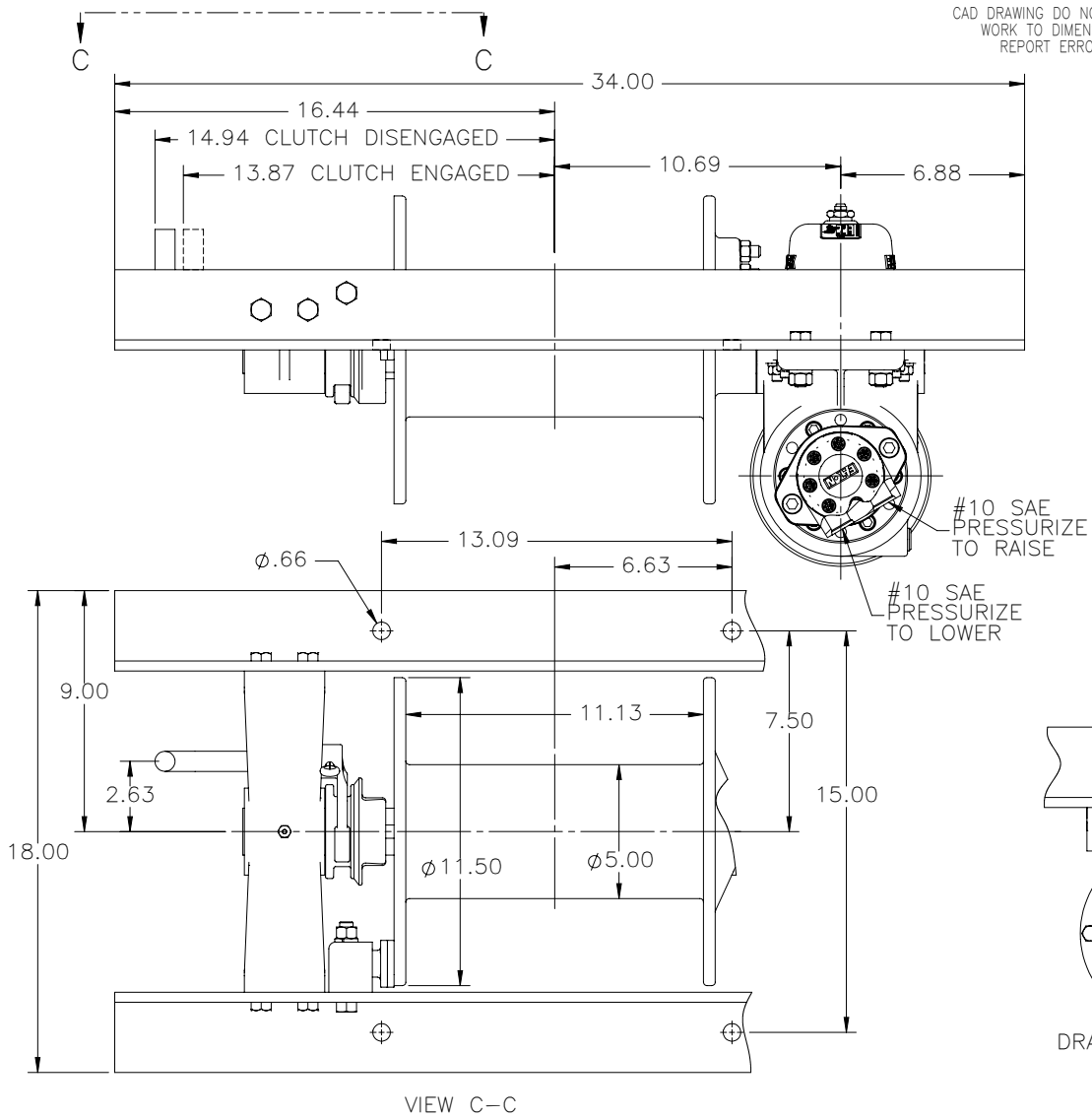


**PERFORMANCE DATA**

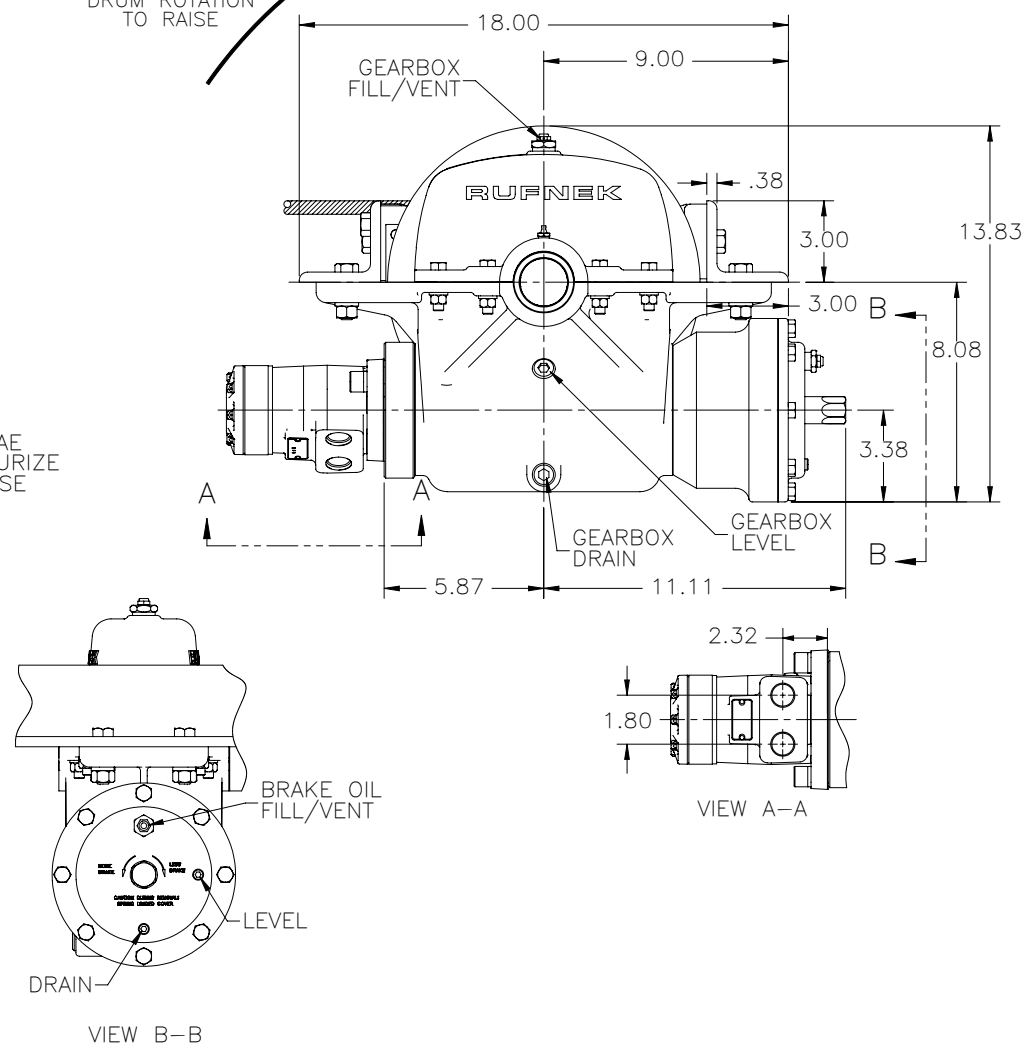
INPUT SPEED (MAX) 800 RPM  
 INPUT TORQUE (MAX) 1309 IN-LBS  
 DYNAMIC EFFICIENCY 53%  
 CABLE DIAMETER .50 IN  
 GEAR BOX RATIO 42:1  
 PRESSURE 1600 PSI  
 FLOW 20 gpm

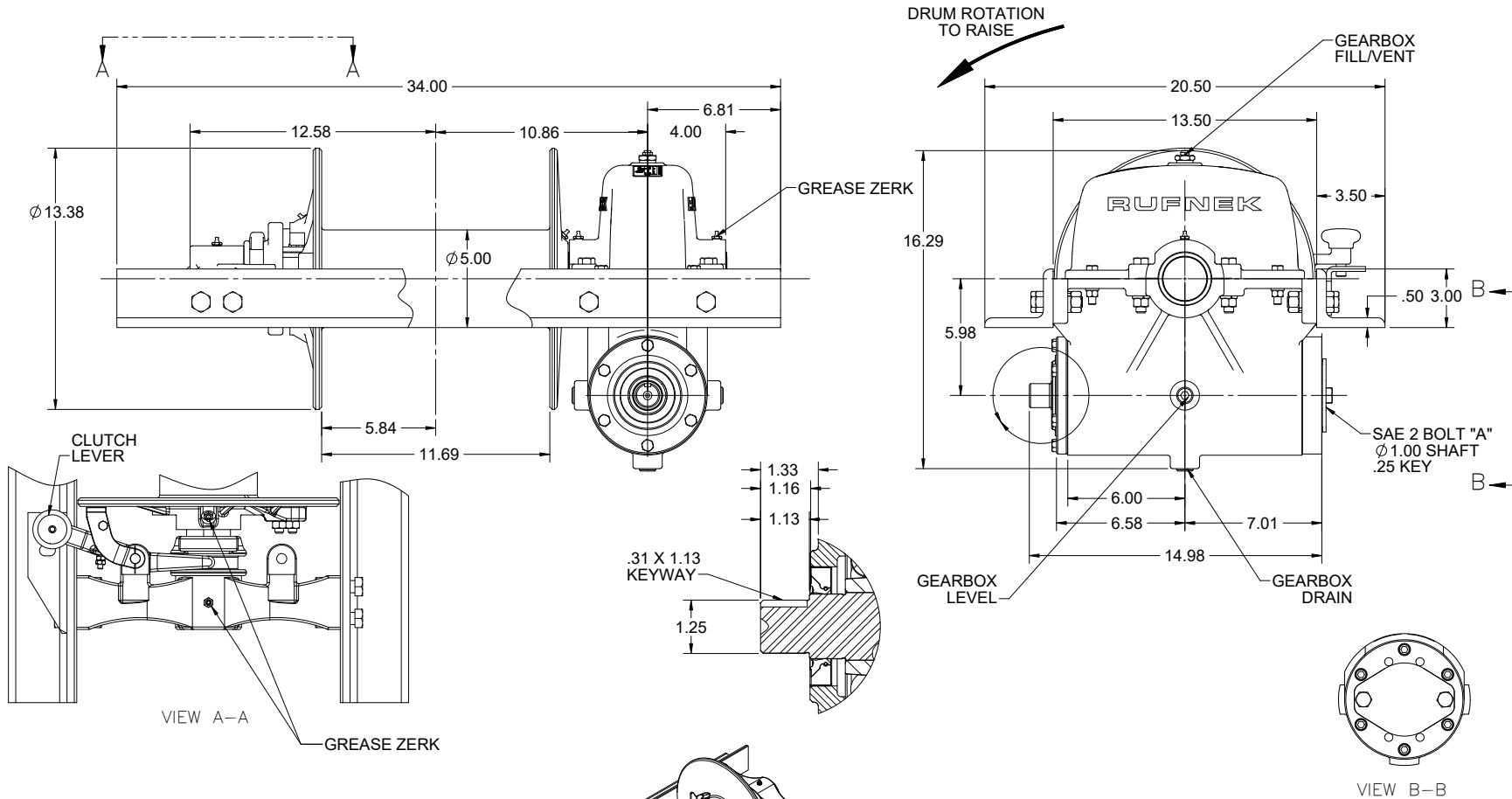
| LAYER | LINE PULL POUNDS | LINE SPEED FT/MIN | TOTAL CABLE FEET |
|-------|------------------|-------------------|------------------|
| 1     | 13000            | 19                | 21               |
| 2     | 10636            | 23                | 47               |
| 3     | 9000             | 28                | 77               |
| 4     | 7800             | 32                | 113              |

CAD DRAWING DO NOT SCALE  
WORK TO DIMENSIONS  
REPORT ERRORS

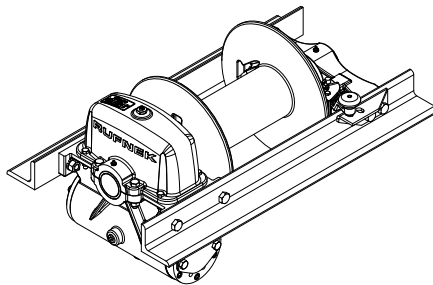


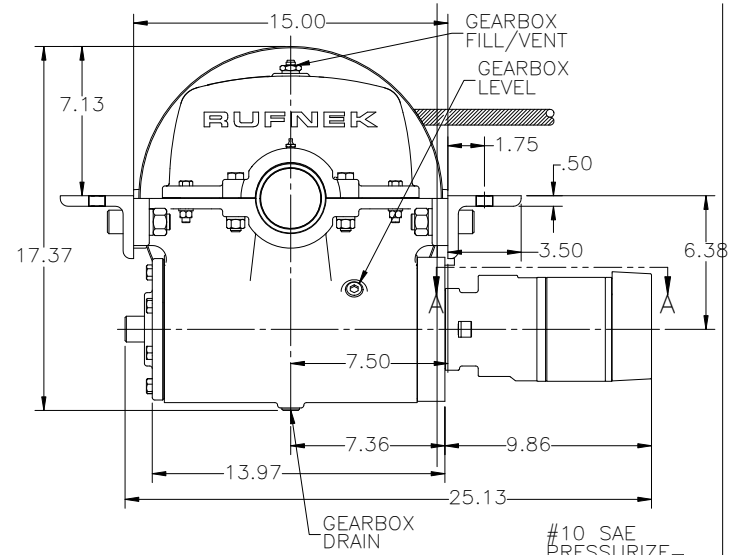
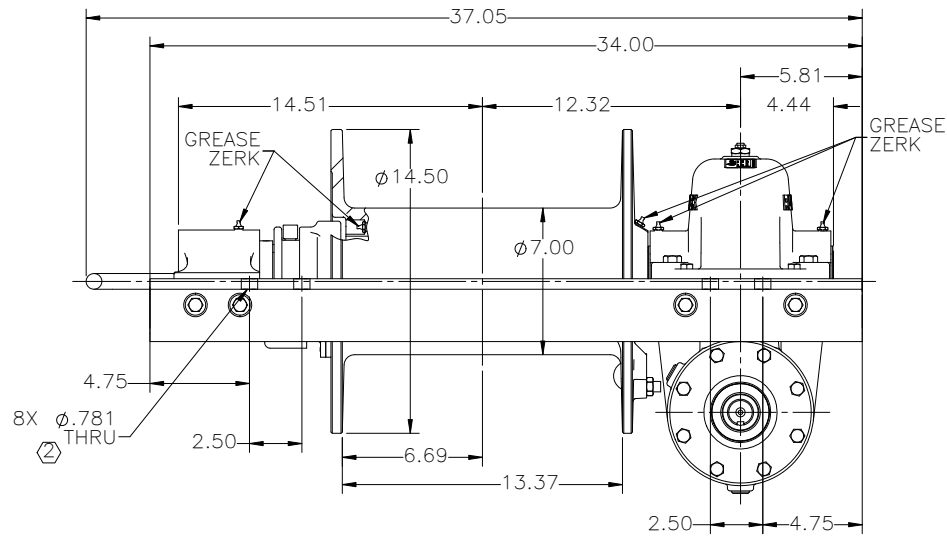
DRUM ROTATION  
TO RAISE





| PERFORMANCE SPECIFICATIONS |       |
|----------------------------|-------|
| GEAR RATIO                 | 30:1  |
| MAX INPUT TORQUE (IN-LBS.) | 4,187 |
| MAX INPUT SPEED (RPM)      | 500   |
| <b>EFFICIENCY</b>          |       |
| STATIC                     | 45%   |
| DYNAMIC                    | 62%   |
| CABLE DIAMETER             | .63   |





1. UNIT PRIMED WITH GRAY PRIMER
2. GEARBOX FILLED WITH 4.50 QTS EP-140 OIL

| WINCH PERFORMANCE SPECIFICATIONS |                       |                   |                  |
|----------------------------------|-----------------------|-------------------|------------------|
| GEAR RATIO                       | WINCH PERFORMANCE AT  |                   | TOTAL DRUM       |
| 32:1                             | 25 GPM                | 2000 PSI          | CAPACITY         |
|                                  | 24.7 CID              |                   | (FT)             |
| LAYER                            | STALL LINE PULL (LBS) | WINCH SPEED (FPM) | $\phi .75$ CABLE |
| FIRST                            | 30,000                | 14                | 34               |
| SECOND                           | 25,127                | 16                | 76               |
| THIRD                            | 21,621                | 19                | 124              |
| FOURTH                           | 18,974                | 21                | 178              |
| *FIFTH                           | 16,904                | 24                | 239              |

\*LAYER FIVE DOES NOT MEET SAE J706 JUL85 SPEC FOR FREEBOARD CLEARANCE

