

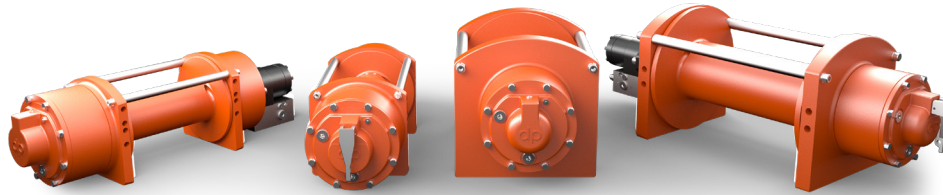


RELENTLESS

RECOVERY WINCHES

DESIGNED FOR THE LIGHT DUTY & CAR CARRIER MARKET

LIGHT DUTY RECOVERY WINCHES



The planetary recovery winch line from dp Winch, proven the world over for heavy duty recovery, has updated offerings in light recovery. Leveraging our experience we incorporate a proven balanced piston brake design that gives longer brake life, effective manual and pneumatic kickouts that provide smooth

engagement/disengagement, and smooth cable drums ready to accept either wire or synthetic rope. And because they are made by dp Winch, a leader in the commercial and military towing and recovery markets for almost 50 years, you can rest assured that these winches are rugged and dependable.

FEATURES

- Drop-in replacement for nearly all OEM winches
- Anti-friction bearings and oil bath for extended life
- Extended width drum available on the 8K, 12K and 20K lb models for expanded rope capacity
- Air & Manual kickout available for easy spooling
- Spring applied cable packer to eliminate rope bird nesting
- Hawse fairlead plate available to reduce unnecessary rope wear
- Increased line speed for faster recovery

| | LAYER | LINE PULL (lbs) | BASE DRUM CAPACITY (ft) | EXTENDED DRUM CAPACITY (ft) | LINE SPEED (fpm) |
|--|-------|-----------------|-------------------------|-----------------------------|------------------|
| 3/8" Diameter Rope | | | | | |
| 8K | 1 | 8000 | 22 | 27 | 38 |
| | 2 | 6830 | 48 | 60 | 45 |
| | 3 | 5960 | 77 | 97 | 51 |
| | 4 | 5280 | 111 | 138 | 58 |
| | 5 | 4750 | 148 | 185 | 64 |
| <i>Ratings are based on 15 gpm and 2500 PSI (57 lpm 172 bar)</i> | | | | | |
| 7/16" Diameter Rope | | | | | |
| 12K | 1 | 12,000 | 19 | 24 | 29 |
| | 2 | 10,000 | 42 | 53 | 35 |
| | 3 | 8600 | 69 | 86 | 41 |
| | 4 | 7540 | 99 | 124 | 47 |
| <i>Ratings are based on 15 gpm and 2500 PSI (57 lpm 172 bar)</i> | | | | | |
| 1/2" Diameter Rope | | | | | |
| 15K | 1 | 15,000 | 28 | 45 | 43 |
| | 2 | 12,930 | 60 | 98 | 50 |
| | 3 | 11,360 | 96 | 157 | 57 |
| | 4 | 10,135 | 137 | 224 | 64 |
| | 5 | 9145 | 182 | 299 | 71 |
| <i>Ratings are based on 20 gpm and 2775 PSI (76 lpm 191 bar)</i> | | | | | |
| 9/16" Diameter Rope | | | | | |
| 20K | 1 | 20,000 | 25 | 41 | 34 |
| | 2 | 16,975 | 54 | 48 | 40 |
| | 3 | 14,750 | 87 | 144 | 46 |
| | 4 | 13,030 | 125 | 206 | 52 |
| | 5 | 11,675 | 168 | 275 | 58 |
| <i>Ratings are based on 20 gpm and 2900 PSI (76 lpm 200 bar)</i> | | | | | |

*Rated line pulls are for winch only, consult rope manufacturer for rope rating.
Designed in accordance with SAE J706*

For more information, contact our sales team today!
1-800-DPWINCH sales@dpwinch.com